


Duty:

The 200 series check valve is an all-stainless steel two-piece flow-permitting device. The CV 200 series is precision manufactured from certified bar stock, ensuring endurance and reliability in any application. 2 psi acting in the permitted direction opens the valve. Non-permitted flow seats the poppet firmly into the conical seating face of the valve body.

The poppet o-ring is pressure formed into the poppet face ensuring a complete seal every action. Alternative spring options are available to activate at other opening pressures.

Applications:

High and low pressure hydraulic Oil, water, Chemical handling, Sanitary food handling applications.

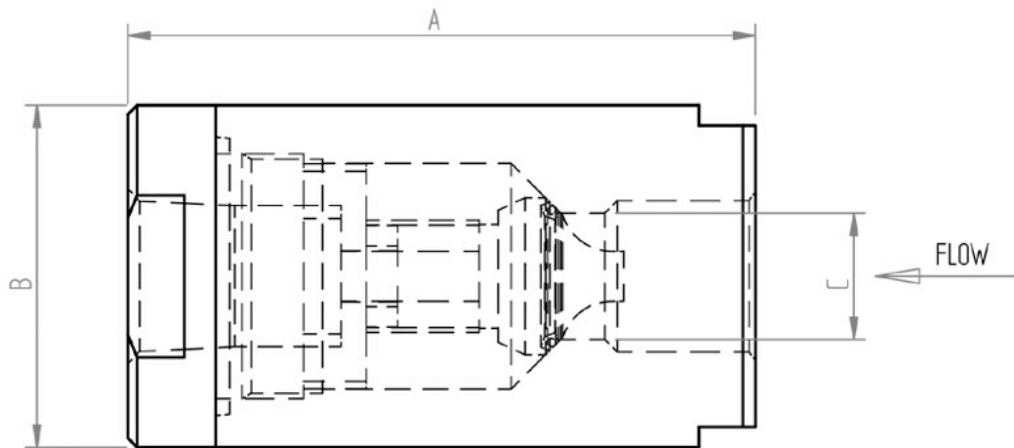
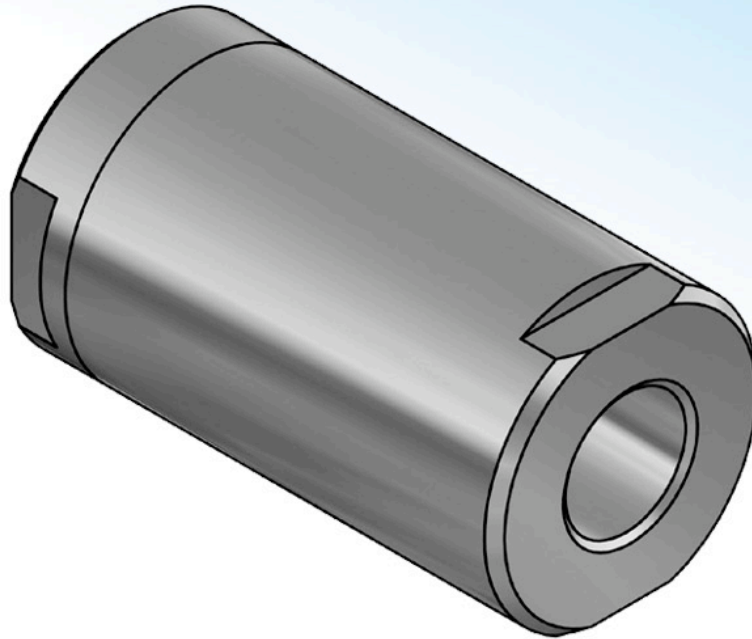
Working Pressure: 4,000 psi (275 BAR)

Components

Component Name	Material Standard
Body	316 Stainless
Cap	316 Stainless
Poppet	316 Stainless
Poppet O-Ring	Nitrile Rubber
Spring	304 Stainless
Cap O-Ring	Nitrile Rubber

Size

Item Code	Nominal Size
CV203	10mm
CV204	12mm
CV206	20mm
CV208	25mm



Sizes

Item Code	A (mm)	B (mm)	C (mm)
CV203	58	31.5	10
CV204	72.6	38.2	12
CV206	100	54.7	20
CV208	109.1	59.8	25