



Screw Together Coupling

Features & Benefits

The OASIS® SC300 series screw together quick release coupling is the simple, safe answer for separating high-pressure pipes and hoses.

The SC300 is an all-stainless, double shut off, non drip coupler, with spring loaded poppets in both male and female halves. The screw-together sleeve provides a positive tamper-proof line connection that cannot be accidentally knocked apart.

All components are precision turned from certified origin stainless steel, guaranteed free of flaws, blemishes, and voids.



Materials

DESCRIPTION	MATERIAL
Male Body	T316 Stainless steel*
Female Body	T316 Stainless steel*
Sleeve	T316 Stainless steel*
Poppet	T316 Stainless steel*
Poppet Seal	Nitrile**
Body Seal	Nitrile**
Spring	303 Stainless

*304 Stainless steel available on request

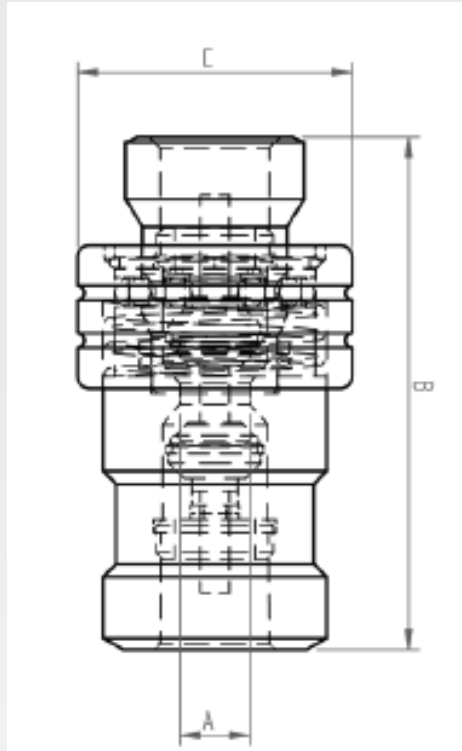
** Viton available on request



Screw Together Coupling

Application & Specification Information

- Purpose designed for sanitary food handling applications including Milk reticulation.
- Fisheries & Marine application
- Water treatment
- Food manufacture



Dimensions (mm)

DIMENSIONS	Inside bore (A)	Overall Length (B)	Sleeve Diameter (C)	Body Diameter
SC303 MALE	10	43	Na	27
SC303 FEMALE	10	56	40	27
SC303 COUPLING	10	81	40	27
SC304 MALE	12	50	Na	32
SC304 FEMALE	12	64	50	32
SC304 COUPLING	12	93	50	32

Operating Pressure Range up to 4000 PSI

NPT is standard quoted thread. SAE, BSP & "weld in" ends available or as per customer request

Quoted price is for complete units (Male & Female). Individual pricing available

All products are manufactured to ISO 9001:2000 standards

*Other sizes available on request

* Other material available on request