



200 Series Check Valves

Features & Benefits

Stainless steel two-piece, serviceable check valve that sets the standard in flow rate.

Precision manufactured from certified bar stock, ensuring endurance and reliability in any application.

Suited to rapid, high frequency pulsing flow.

Easy to install service kits are readily available. Visit www.OasisNGV.com for step by step installation guide.

Standard crack pressure differential 4 to 10 PSI.

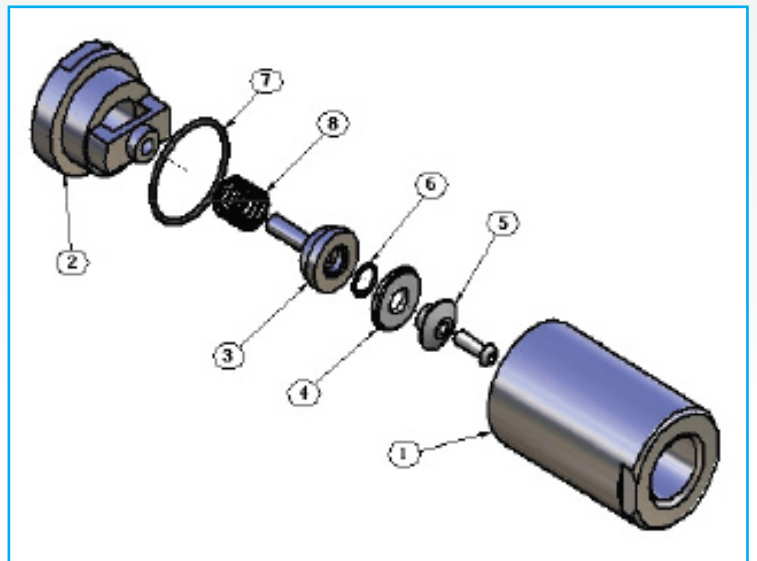
Alternative cracking pressures may be selected by using (retrofitable) springs. Talk to Oasis to create a solution specifically for your application.



Materials

ITEM	PART	MATERIAL
1	Body	T304 Stainless steel*
2	Cap	T304 Stainless steel*
3	Poppet body	T304 Stainless steel*
4	Poppet seal	PTFE
5	Poppet retainer	T304 Stainless steel*
6	Poppet O-ring	Nitrile N90
7	Cap O-rings	Nitrile N90
8	Poppet spring	T312 Stainless steel*

* 316 Stainless steel available on request.

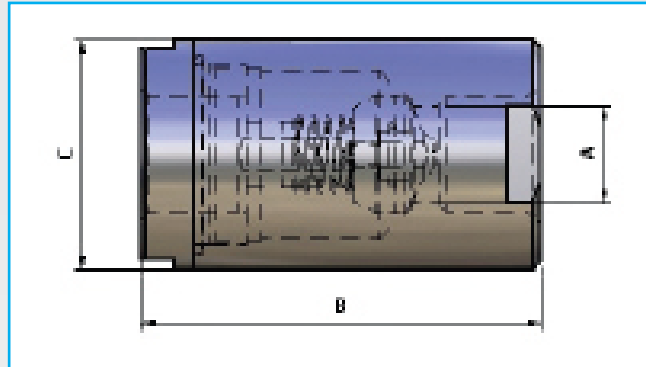




200 Series Check Valves

Application & Specification Information

- CNG dispenser.
- Fill panels.
- Priority panels.
- Compressors.
- Trailers.



Dimensions (mm)

PART CODE	Bore A	Length B	Diameter C	C_v^*	K_v^{**}
CV203-4NTSN	9	58	31.5	3.35	2.89
CV204-4NTSN	12	73	38.2	5.16	4.45
CV206-4NTSN	20	100	54.7	15.56	13.41
CV208-4NTSN	25	109	59.8	21.34	18.40
CV212-4NTSN	32	136	90.0	37.50	32.33

* C_v = USGPM-PSI.

** K_v = M3/hr-BAR.

Operating Pressure Range up to 6000 PSI.

Burst Pressure > 20,000 PSI.

NPT is standard thread. SAE, BSP, male thread or tubelock options available.

All products are manufactured under ISO 9001:2000 accredited standards.

Other diameters and products with poppets rated to different temperatures available on request.

Standard product cracking pressure 4 - 10 PSI pressure differential. Alternate cracking pressures can be selected by choosing different strength springs. Talk to Oasis to confirm the spring selection is right for your application.