



BV700 Series Ball Valve NPT Instruction Manual

▲ WARNING

Failure to follow these instructions or to properly install and maintain this equipment could result in gas leakage, fire or explosion causing property damage and personal injury or death.

Oasis products must be installed, operated and maintained by trained and competent personnel in accordance with all applicable local codes, rules and regulations in addition to the Oasis Instructions.

Oasis Engineering Ltd. will not be held liable in such circumstances where installation, operation and maintenance procedures were performed by incompetent personnel resulting in improper assembly, unsafe operation, equipment damage or personal injury.

Oasis recommends that all service technicians should watch the Product Servicing Video before attempting to service this part.



Servicing Video

Oasis Engineering Ltd
129 Birch Avenue, Tauranga, New Zealand.
T: +64 7 928 3808
E: info@oasisngv.com
W: www.OasisNGV.com



Instruction Manual

Warning!

High pressure gas and gas equipment can cause serious harm to both infrastructure and personnel if safety precautions are not followed.

Oasis recommends considering the use of the following PPE when working with high pressure along with any other site specific health and safety requirements:



Foot Protection



Hearing Protection



Safety Helmets



Hand Protection

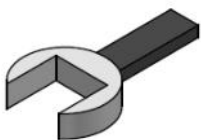


Safety Glasses



Ensure the system is clean of debris, vented and isolated before any installation or servicing work is carried out.

Tools Required



Spanner
(Wrenches)
Recommended spanner sizes on page 4



Yellow, Gas Rated, PTFE Thread Tape
- AW TITASEAL
- McMaster-Carr High-Density Thread Sealant Tape
- Blue-Monster gas-guard
- Or Similar



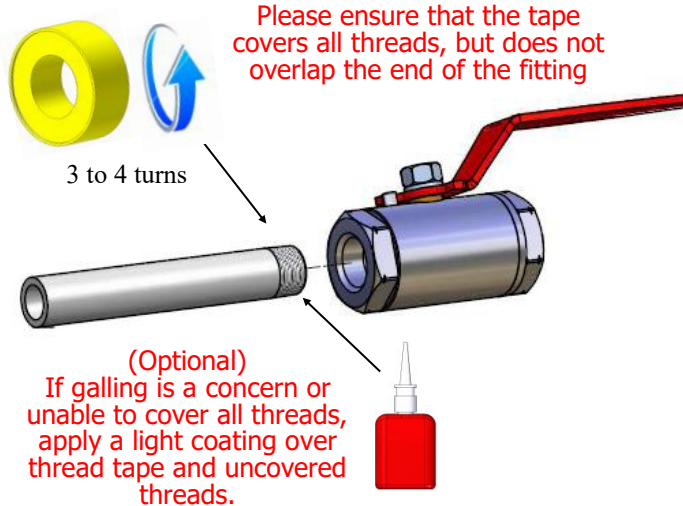
Spray bottle
(Snoop or soapy water)



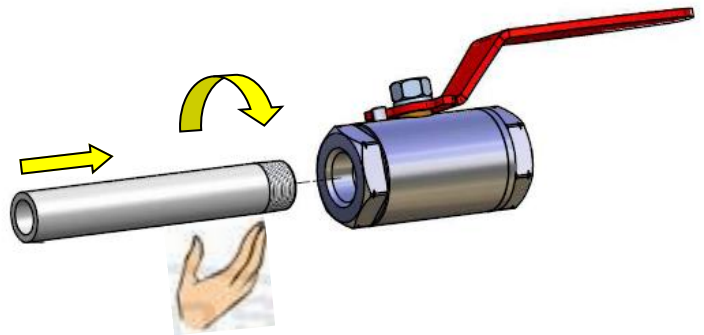
Anaerobic Thread Sealant with PTFE (Optional)
- Loctite 567
- Swagelok SWAK
- Herson Dripstop 940
- Gasoila FasSeal-ATS
- Or Similar

FOR BALL VALVES BV710 & BV712 MAKE SURE YOU INSTALL THE VALVE IN THE FLOW DIRECTION AS INDICATED BY THE ARROW ON THE VALVE BODY

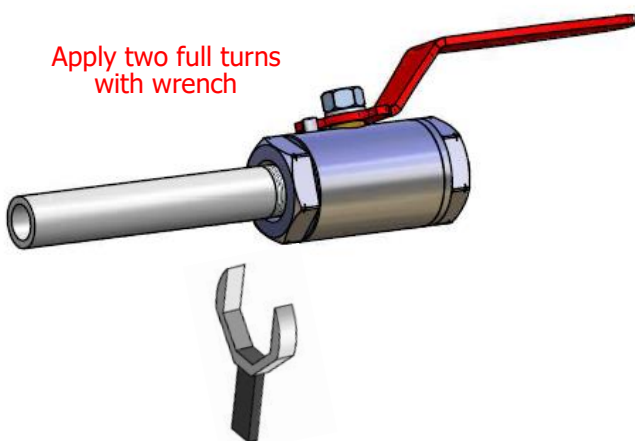
1. Apply thread tape and thread sealant.



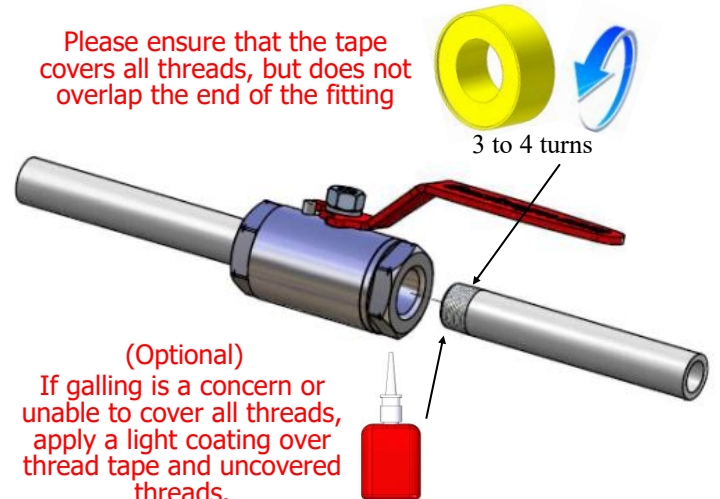
2. Tighten by hand



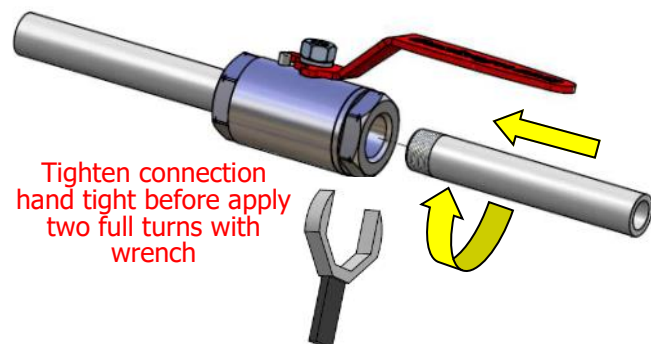
3. Tighten connection.



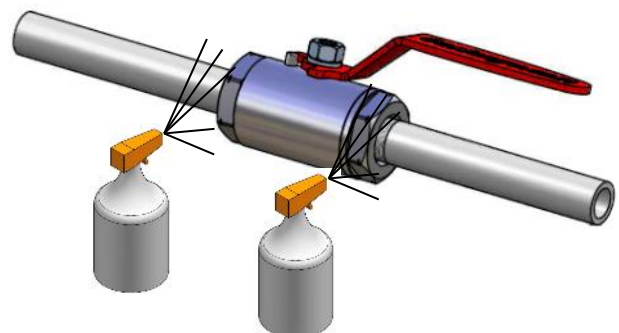
4. Apply thread tape and thread sealant.



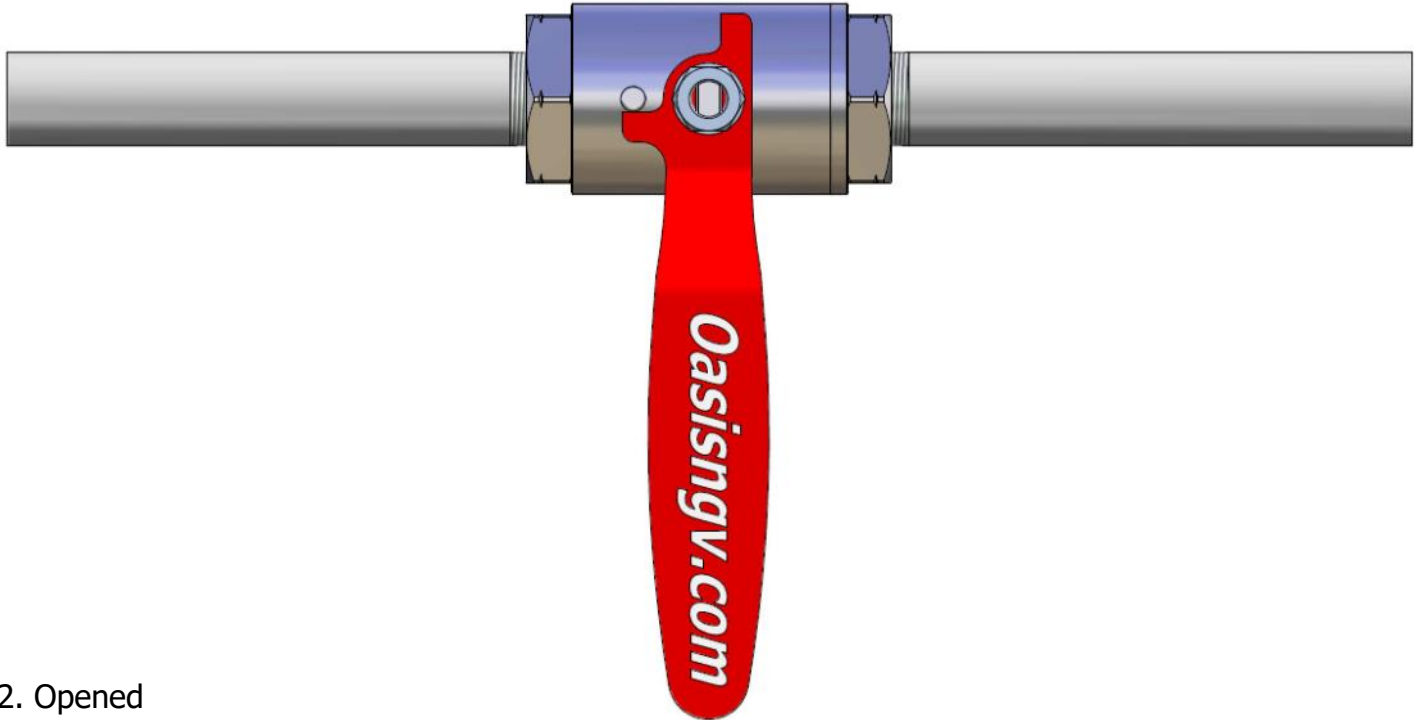
5. Join and tighten the connection.



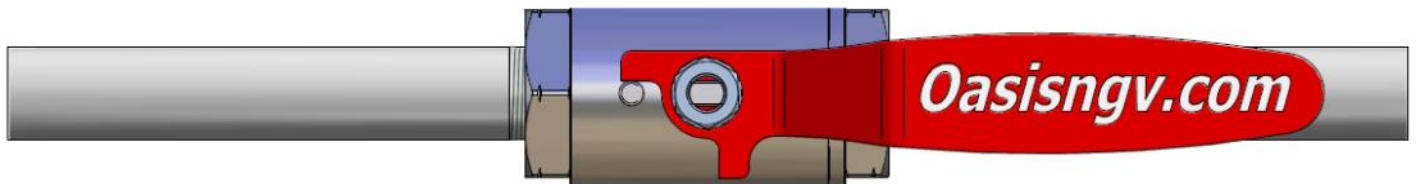
6. Leak test on first use using snoop or soapy water.



1. Closed



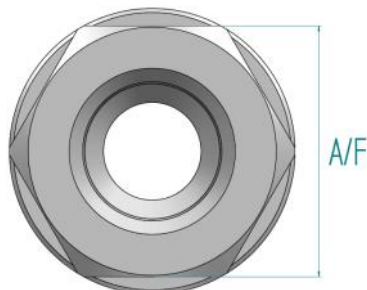
2. Opened



Important: Actuate valve 4 times before use to ensure initial sealing.

**Recommended Spanners
for End Caps:**

- BV702 = 25mm**
- BV703 = 28mm**
- BV704 = 34mm**
- BV706 = 50mm**
- BV708 = 60mm**
- BV710 = 66mm**
- BV712 = 79mm**



**Recommended Spanners
for Stem Nuts:**

- BV702 = 10mm**
- BV703 = 13mm**
- BV704 = 13mm**
- BV706 = 19mm**
- BV708 = 19mm**
- BV710 = 22mm**
- BV712 = 22mm**

Service Kit Parts

BV702 — BV703 — BV704*

2 x Seats^



1 x Gland



1 x Locking Tab**



1 x Stem



1 x Silicone



1 x Ball



1 x Cap O-ring



BV706* — BV708* — BV710 — BV712

2 x Seats^



1 x Gland



1 x Locking Tab**



1 x Stem



1 x Silicone



1 x Cap Backup O-ring



1 x Ball



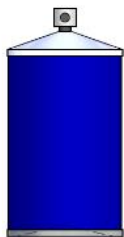
1 x Cap O-ring



*It is normal for the service kit to include a ball with a small hole in the bottom
 ** only used when servicing actuated ball valves.
 ^ For low pressure service kits, the seats will be supplied with an O-ring installed.

The Complete Oasis Seal Kit must be used

Tools Required



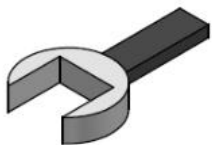
Cleaner (Warm Soapy
Water or Similar)



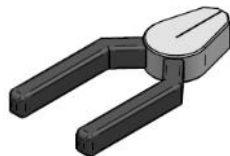
Pick Tool
Part Number:
TOOL-PICK
(Sold separately)



Anti Seize Grease
(Loctite 771 or Similar)
For All Threads



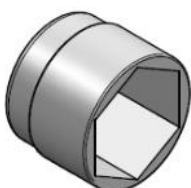
Spanner
(Wrenches)



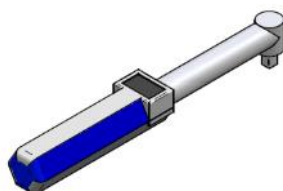
Pliers



Oasis Plastic Tool
Part Number:
TOOL-BVASSY
(Sold separately)
or Similar



Sockets



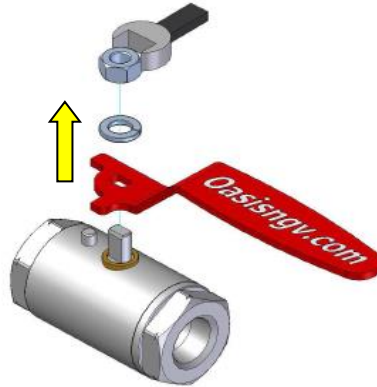
Torque Wrench

1. Unscrew stem nut.

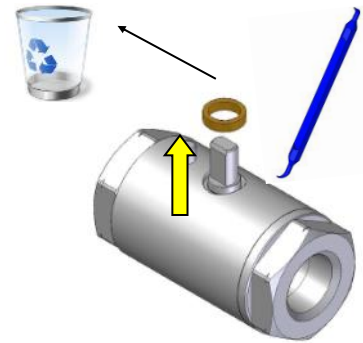


Open and close valve to ensure all trapped gas is released.

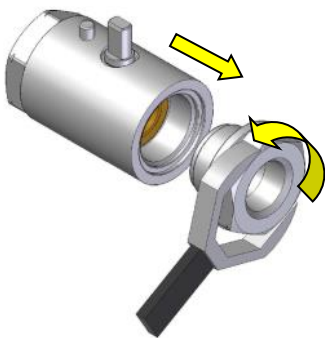
2. Remove handle.



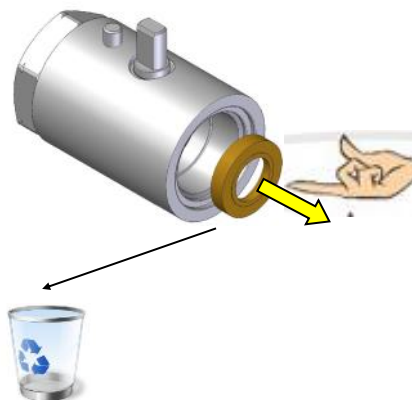
3. Discard gland.



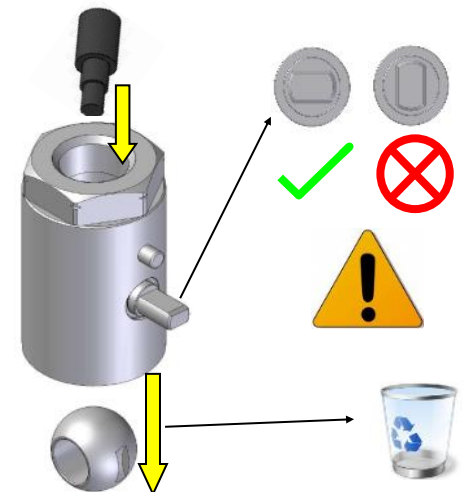
4. Remove end cap.



5. Discard seat.

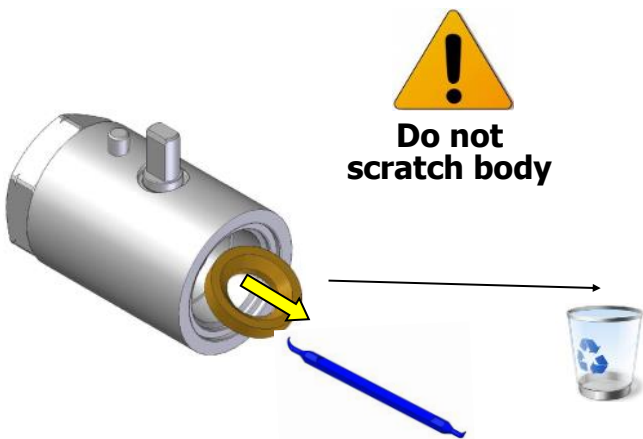


6. Remove ball.



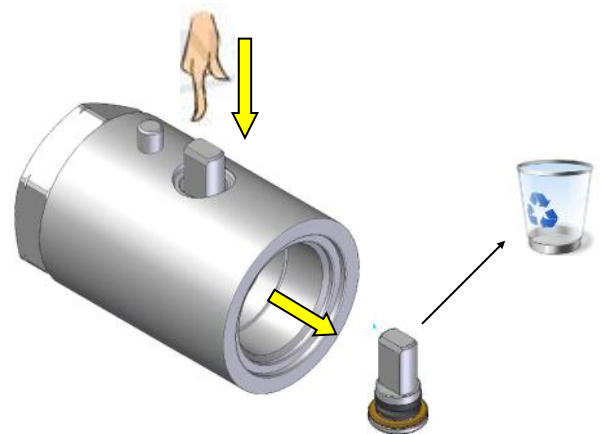
BV702 - BV703

7. Remove 2nd seat first.



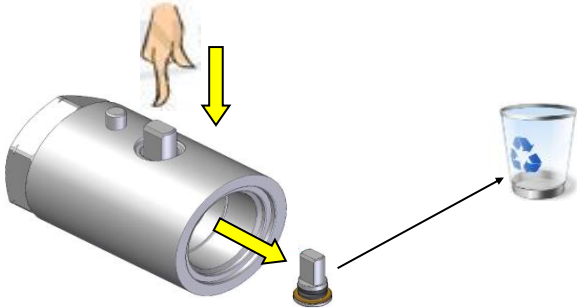
BV704 - BV706 - BV708 - BV710 - BV712

7. Remove stem first.



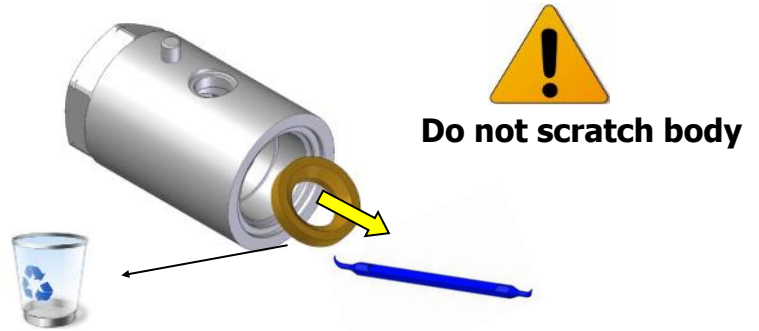
BV702 - BV703

8. Remove and discard stem.



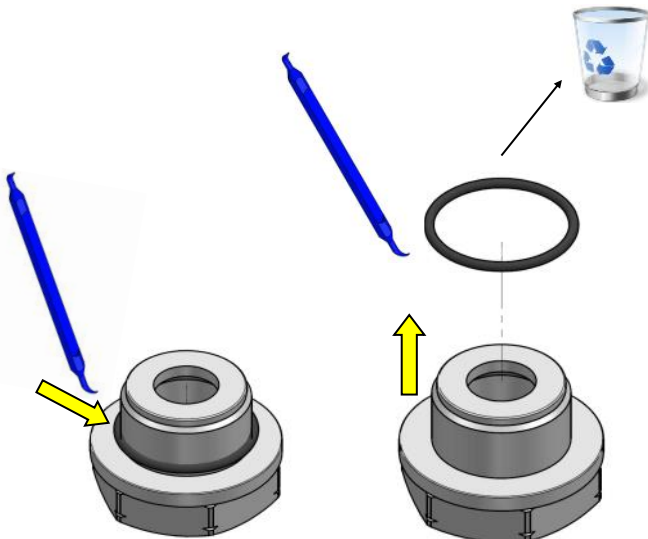
BV704 - BV706 - BV708 - BV710 - BV712

8. Remove and discard 2nd seat.



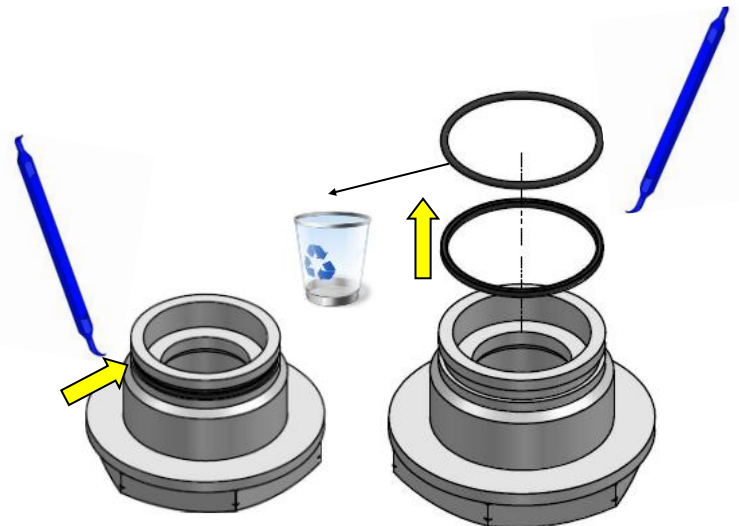
BV702 - BV703 - BV704

9. Remove cap O-ring and discard.

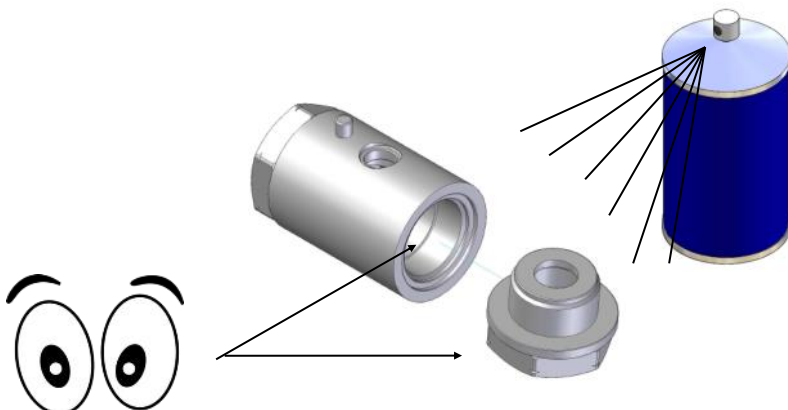


BV706 - BV708 - BV710 - BV712

9. Remove cap O-rings and discard.

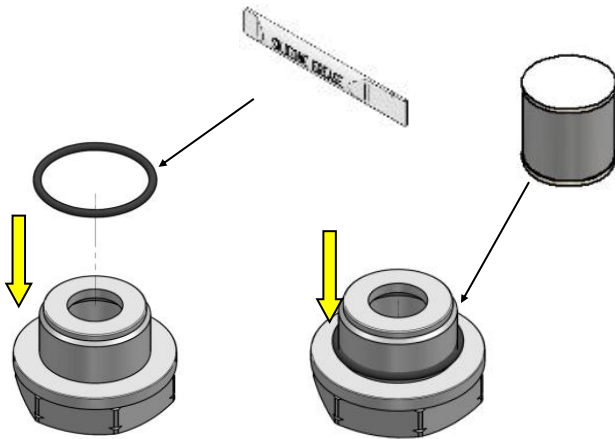


10. Clean body and end cap. Visually inspect parts for damage.



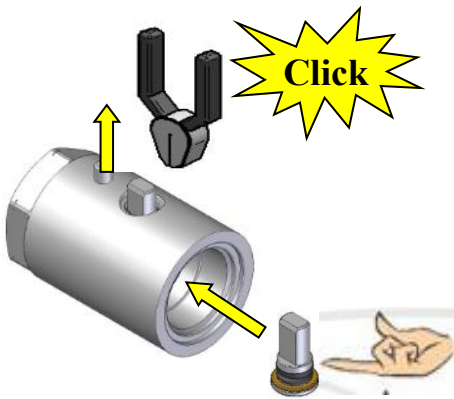
BV702 — BV703 — BV704

1. Fit O-ring.

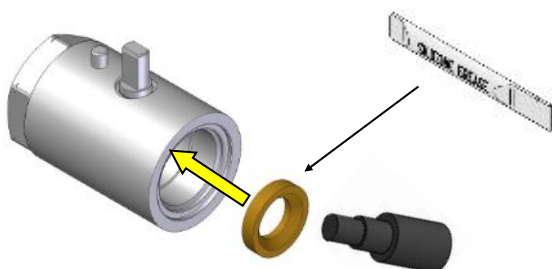


BV702 — BV703

2. Insert Stem Assembly first.

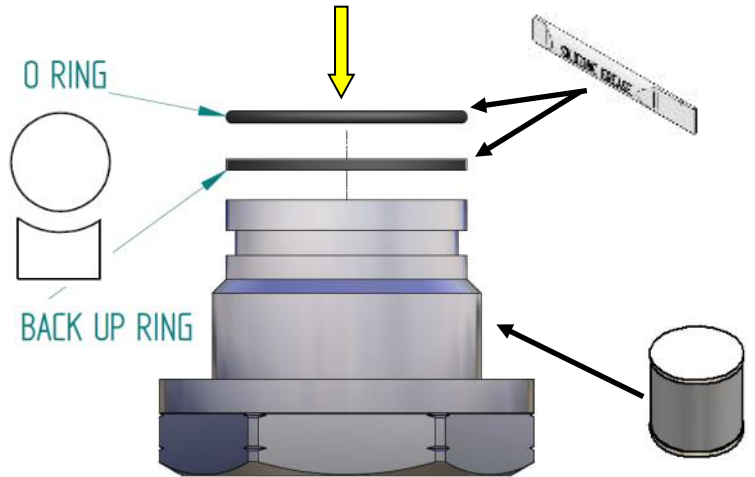


3. Apply silicone grease to new seat and install. Take care not to pinch O-ring when installing low pressure seat.



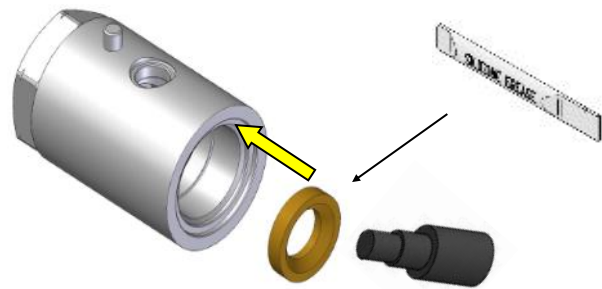
BV706 — BV708 — BV710 — BV712

1. Fit End Cap O-rings.

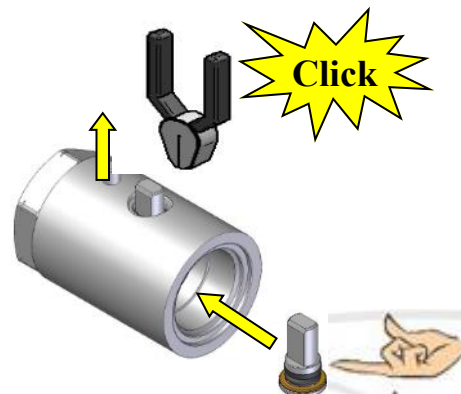


BV704 - BV706 - BV708 - BV710 - BV712

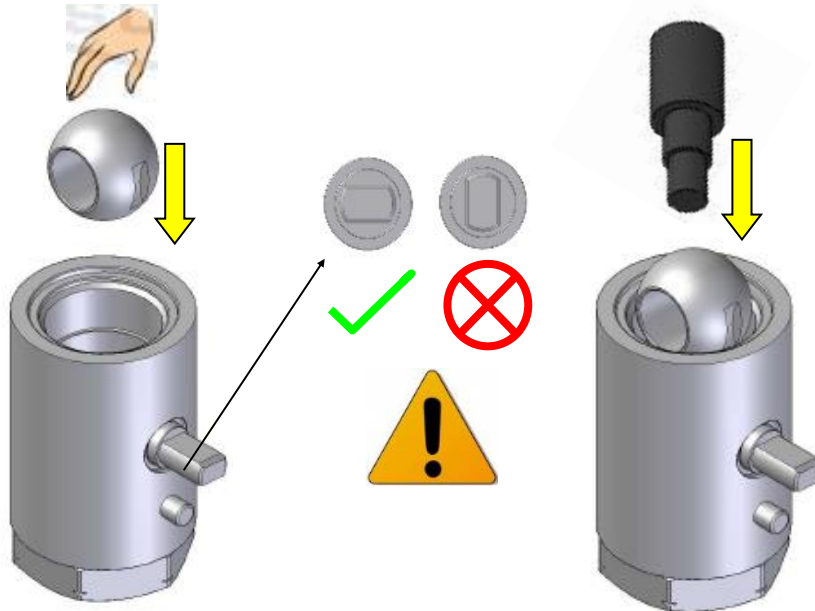
2. Apply silicone grease to new seat and install first. Take care not to pinch O-ring when installing low pressure seat.



3. Insert Stem Assembly.

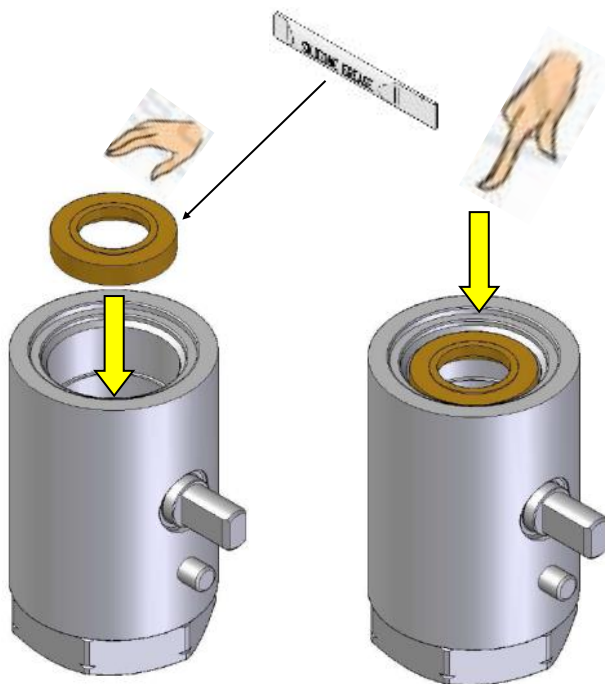


4. Insert Ball.



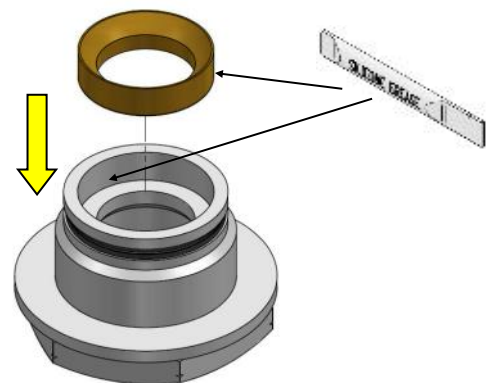
BV702 - BV703 - BV704

5. Apply silicone grease to new seat and install. Take care not to pinch O-ring when installing low pressure seat.

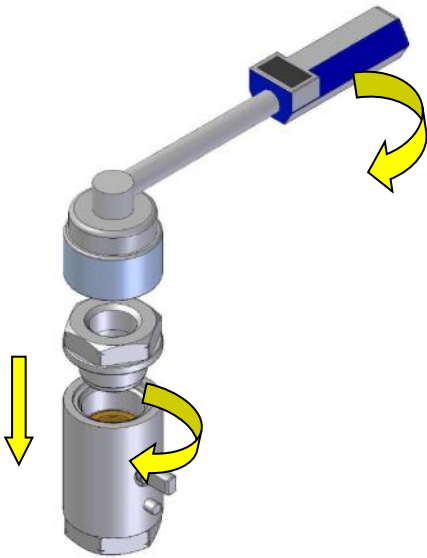


BV706 - BV708 - BV710 - BV712

5. Apply silicone grease to new seat and install in cap. Take care not to pinch O-ring when installing low pressure seat.



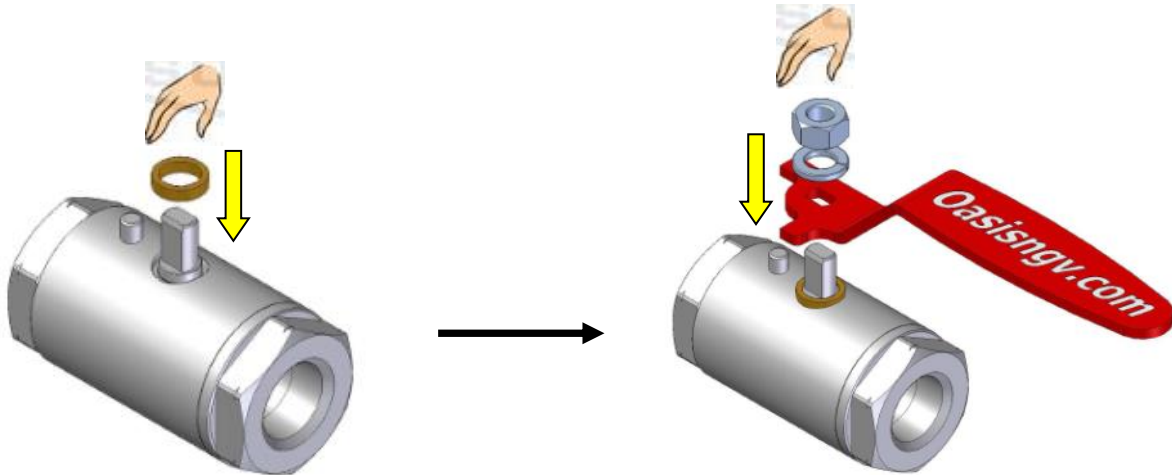
6. Torque tight the end cap.



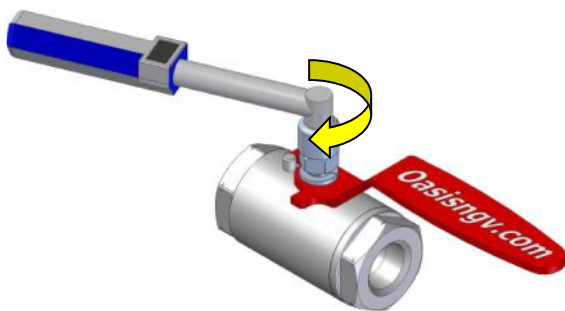
**Recommended
End Cap Torques:**

BV702=35Nm
 BV703=50Nm
 BV704=60Nm
 BV706=120Nm
 BV708=120Nm
 BV710=120Nm
 BV712=120Nm

7. Install gland and screw on handle nut.



8. Tighten stem nut.



**Recommended
Handle Nut Torques:**

BV702=3Nm
 BV703=3Nm
 BV704=3Nm
 BV706=6Nm
 BV708=6Nm
 BV710=6Nm
 BV712=6Nm

9. Servicing complete. Re-install as per the instructions on page 3 .



Important: Actuate valve 4 times before use to ensure initial sealing.