



400 Series TPED Cylinder Valves with TPRD

Applications

High Flow cylinder valves for bulk gas cylinder storage stacks.

Suitable for Hydrogen. Check with Oasis for compatibility with other gases.



TH404 (SAE and Medium Pressure)

Materials

Item	Part	Material
1	Body & Cap	Stainless Steel
2	Ball	Stainless Steel
3	Stem	Stainless Steel
4	Seats	PEEK
5	Thrust washer	POM

Item	Part	Material
6	Gland	POM
7	O-rings	FKM
8	Backup rings	NBR
9	Handle	Stainless Steel
10	Adaptor	Stainless Steel

Product Information

Type Tested to ISO23826.

Complies with TPED 2010/35/EU.

All products are manufactured to ISO 9001 standards.

385 or 520 bar working pressure options available.

UNF18 (1 1/8-12 UNF) or 1 1/2-12 male cylinder thread.

SAE threads conform to SAE J1926-1.

MP threads to Maximator Document 3999.1831.

TPRD included:

- Service pressure: 700 bar at 20 °C
- Working temperature: -40 to 85 °C.
- Release temperature: 110 °C.

Features & Benefits

All materials are suitable for use in Hydrogen applications.

Easy to service, kits readily available.

Quarter turn handle - easy to tell when the valve is in open or closed position.

Anti blow-out stem design.

Includes a 3/8" cone and thread live PRD port.

TPRD supplied with valve, TPRD port can rotate 360 degrees.

Manufactured from certified bar stock.

Lockout system available to prevent accidental operation of valve.

3/8" SAE O-Ring (9/16-18 UNF) commissioning port.

The commissioning port allows the cylinder to be isolated for testing.

Fully indexable adjustment, eliminating the need to "clock" cylinders.



400 Series TPED Cylinder Valves with TPRD

Medium Pressure (Cone and Thread) Product Specification

Part Code	Mass lb (kg)	Minimum Operating Pressure bar (psi) *	Working Pressure (WP) bar (psi) **	MAWP (PS) bar (psi) ***	Min. Temp. °F (°C)	Max Temp. °F (°C)	Time Before Rekit [^]	Stem Open Torque ft-lb (Nm) ^{^^}	Cv	Service Kit
TH404-66BA8R8-G000	6.6 (3.0)	6.9 (100)	520 (7539)	650 (9424)	-40 (-40)	185 (85)	5 Years	14.7 (20)	1.2	TH404-SK1

* Lowest settled gas pressure for which the ball valve is designed. This is the minimum pressure that the product will hold constant bubble tight seal.

** Settled pressure of a compressed gas at a uniform reference temperature of 15°C in a full pressure receptacle for which the valve is intended.

*** Minimum pressure applied to the valve during testing.

[^] The service life stated depend on the system conditions and may not be achievable in all situations.

Contact Oasis for further information.

^{^^} Maximum opening torque at maximum operating pressure.

SAE Product Specification

Part Code	Mass lb (kg)	Minimum Operating Pressure bar (psi) *	Working Pressure (WP) bar (psi) **	MAWP (PS) bar (psi) ***	Min. Temp. °F (°C)	Max Temp. °F (°C)	Time Before Rekit [^]	Stem Open Torque ft-lb (Nm) ^{^^}	Cv	Service Kit
TH404-62BA8R8-G000	6.6 (3.0)	6.9 (100)	520 (7539)	610 (8845)	-40 (-40)	185 (85)	5 Years	14.7 (20)	4.9	TH404-SK2
TH404-62B98R8-G000			385 (5583)	462 (6699)						TH404-SK3

* Lowest settled gas pressure for which the ball valve is designed. This is the minimum pressure that the product will hold constant bubble tight seal.

** Settled pressure of a compressed gas at a uniform reference temperature of 15°C in a full pressure receptacle for which the valve is intended.

*** Minimum pressure applied to the valve during testing.

[^] The service life stated depend on the system conditions and may not be achievable in all situations.

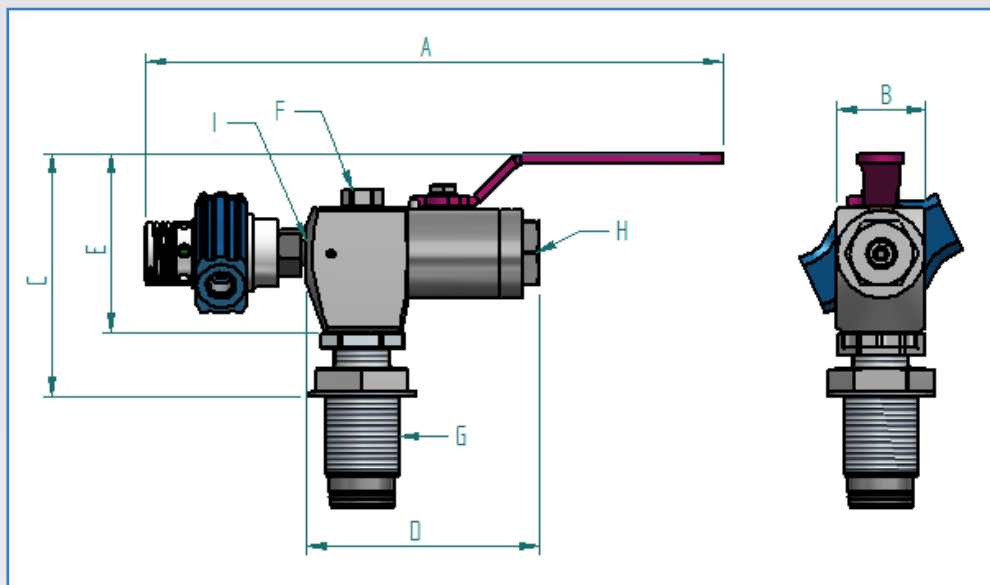
Contact Oasis for further information.

^{^^} Maximum opening torque at maximum operating pressure.



400 Series TPED Cylinder Valves with TPRD

Dimensions - Inch (mm)



Part Code	A	B	C	D	E
TH404-66BA8R8-G000					
TH404-62BA8R8-G000	11.7" (297mm)	1.8" (46mm)	5.0" (126mm)	4.7" (120mm)	3.6" (92mm)
TH404-62B98R8-G000					

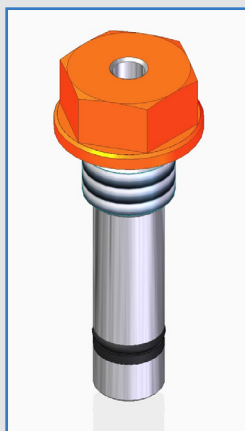
Connection Specifications

Part Code	F COMMISSIONING PORT (SUPPLIED WITH HD PLUG)	G MALE CYLINDER THREAD	H FEMALE END CAP THREAD	I (PRD/LIVE PORT) FEMALE THREAD
TH404-66BA8R8-G000	9/16"-18 UNF (3/8" SAE)	1 1/2" UNF male bore seal	9/16"-18 UNF (3/8" MP)	9/16"-18 UNF (3/8" MP)
TH404-62BA8R8-G000			1/2" SAE (3/4-16 UNF- 2B)	
TH404-62B98R8-G000		UNF18		



400 Series TPED Cylinder Valves with TPRD

Accessories:



TH404-010 Commissioning Plug

Features & Benefits

Manufactured from certified bar stock.

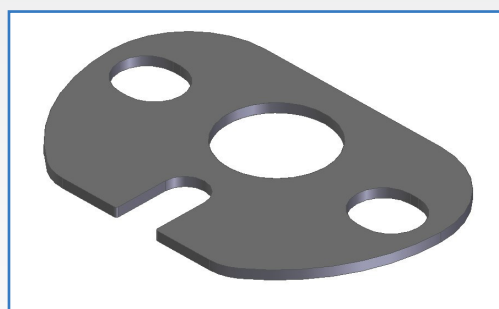
Allows the cylinder to be isolated for testing.

Can be powder coated to your custom safety colour.

Part Code	SAE Thread Size	Mass Oz (g)	Material	Hex size	Min. Operating Pressure bar (psi)*	Max. Operating Pressure bar (psi)**	Min. Temp. °F (°C)	Max Temp. °F (°C)	Service Kit
TH404-010	3/8"	2.2 (60)	Stainless Steel	19 mm	6.9 (100)	650 (9424)	-40 (-40)	185 (85)	TH404-010-SK1

* Minimum pressure that the product will hold constant bubble tight seal.

** Maximum pressure that the product will hold constant bubble tight seal.



TH404 Lockout Plate

Features & Benefits

Prevents accidental opening or closing of the valve.

Part Code	Material
XTH404-012	Stainless Steel