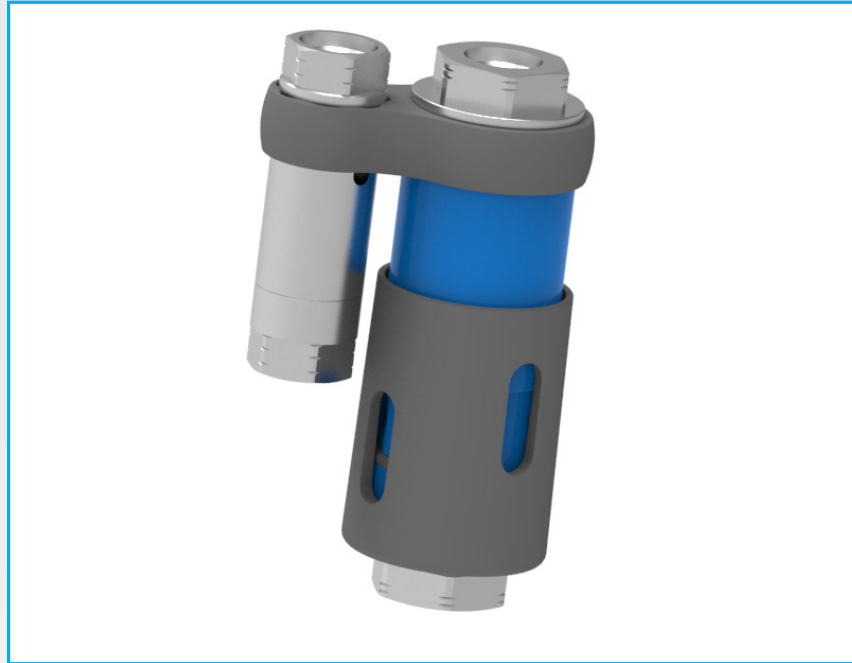




# 100 Series Dispenser Breakaway

## Applications

Inline breakaway designed for use in both public and private CNG refueling stations.



IB103-7SPSH-T - 3/8" Inline Breakaway with Vent Hose Breakaway

## Materials

Item	Part	Material
1	Body	7075 Aluminum
2	Caps	316 Stainless steel
3	O-rings	Nitrile
4	Male component	316 Stainless steel
5	Springs	300 Series stainless steel
6	Bump stops	Urethane

## Product Information

Protects CNG dispensers from drive-away incidents by separating and isolating the dispenser from the fill hose.

Upstream part light weight design reduces dispenser damage in case of breakaway event.

All products are manufactured under ISO 9001 accredited standards.

Complies with ANSI/IAS NGV4.4-1999 R2014 / CSA 12.54-M99.

CRN (0H22035.5C) approved for all provinces and territories.

Complies to PED 2014/68/EU.

## Features & Benefits

Large soft bump stops protect dispenser panels from damage.

Body tested to 102,000 pressure cycles.

Easily reconnected after a breakaway event.

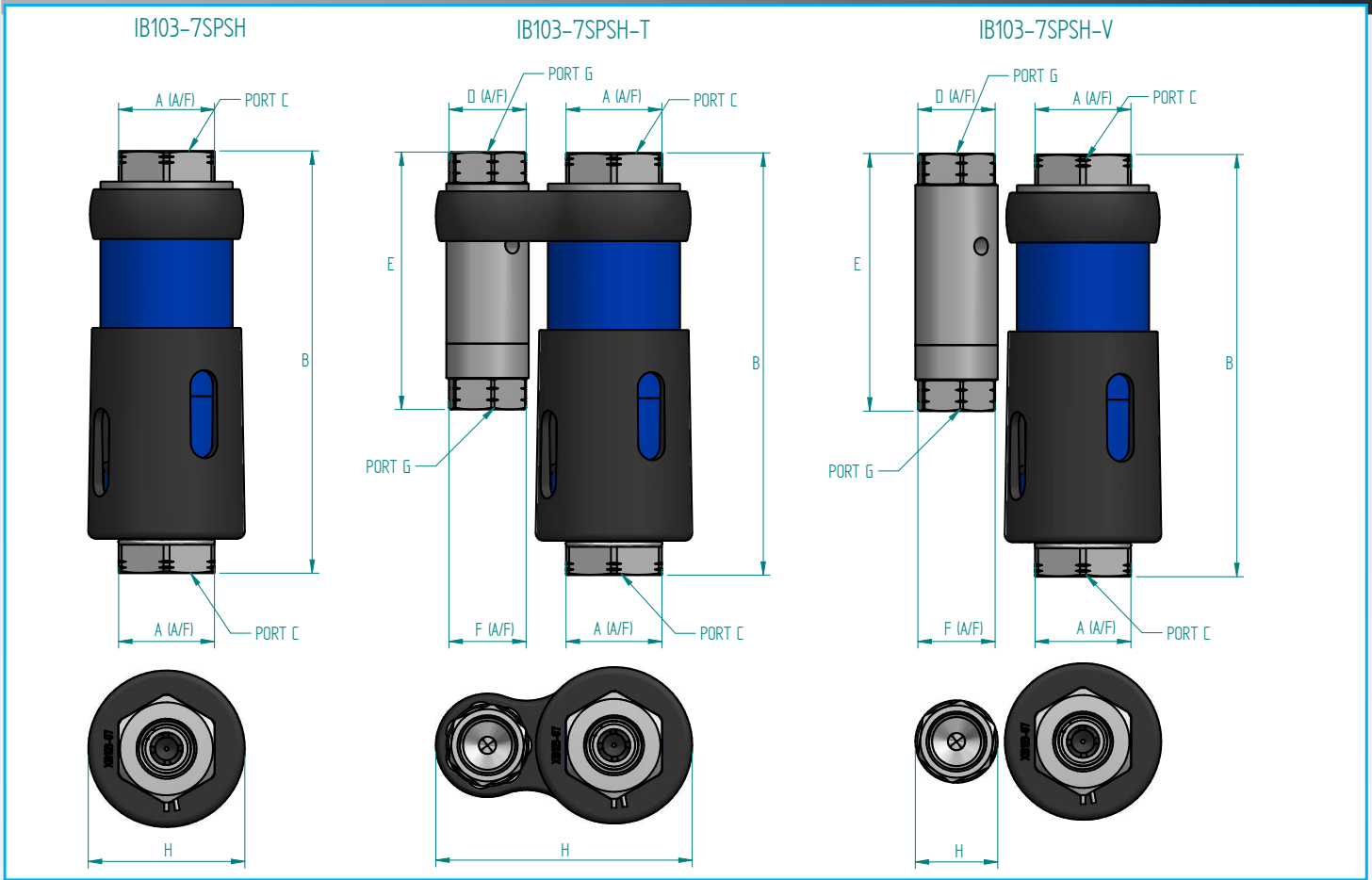
Replacement male end of breakaway available for purchase separately.

SAE Ports to SAE1926-1 are standard.

Vent breakaway available mounted or separate.



## 100 Series Dispenser Breakaway



### Dimensions Inch (mm)

Part Code	Size	A (A/F)	B	PORT C	D (A/F)	E	F (A/F)	PORT G	ØH	Breakaway Force
IB103-7SPSH	3/8"	1" (25)	4.34"(110.2)	9/16-18 SAE FEMALE	0.67"(17)	2.64"(67)	0.75"(19)	9/16-18 SAE FEMALE	1.61"(41)	222N < 660N 50lbf < 148lbf
IB103-7SPSH-T <sup>H</sup>	3/8"	1" (25)	4.34"(110.2)	9/16-18 SAE FEMALE	0.67"(17)	2.64"(67)	0.75"(19)	9/16-18 SAE FEMALE	2.64"(67)	222N < 660N 50lbf < 148lbf
IB103-7SPSH-V <sup>H</sup>	3/8"	1" (25)	4.34"(110.2)	9/16-18 SAE FEMALE	0.67"(17)	2.64"(67)	0.75"(19)	9/16-18 SAE FEMALE	0.85"(21.5)	222N < 660N 50lbf < 148lbf

<sup>H</sup> Includes IB102-6AXXP Vent Hose Breakaway - more information about this product in its respective data sheet.

### Product Specification

Part Code	Mass lb (kg)	Max. Operating Pressure bar (psi) *	Test Pressure bar (psi) **	Min. Temp. °F (°C)	Max Temp. °F (°C)	Cycles Before Rekit <sup>^</sup>	Max. Number of Disconnects <sup>#</sup>	Cv	Service Kit
IB103-7SPSH	0.86 (0.39)	312.5 (4532)	375 (5440)	-40 (-40)	150 (65)	100,000	10	1.65	IB103-SK
IB103-7SPSH-T	1.15 (0.52)	312.5 (4532)	375 (5440)	-40 (-40)	150 (65)	100,000	10	1.65	IB103-SK / IB102-SK1
IB103-7SPSH-V	1.15 (0.52)	312.5 (4532)	375 (5440)	-40 (-40)	150 (65)	100,000	10	1.65	IB103-SK / IB102-SK1

\* Maximum pressure which the product can be constantly operated at.

\*\* Maximum pressure that can be applied for leak testing without causing damage to the product.

<sup>^</sup> It is recommended that the breakaway is re-kitted on or before the maximum usage duration to ensure it remains leak tight. The temperature's and cycles stated depend on the system conditions and may not be achievable in all situations. Contact Oasis for further information.

<sup>#</sup> Maximum number of disconnects recommended before the product is serviced.

We reserve the right to modify product specifications without prior notice.



# 100 Series Dispenser Breakaway

## Replacement IB103 Breakaway Male

Breakaway male parts may get damaged when hitting the ground during a separation event. This part can be purchased individually in order to minimize waste and cost of having to replace the complete breakaway.

The black male guard has being designed to minimise potential damage to the male cap on a separation event.



IB103-7SPSH-M - Breakaway Male Replacement

## Materials

Item	Part	Material
1	Male Cap	316 Stainless steel
2	O-rings	Nitrile
3	Male Guard	Black Urethane
4	Bump Clip	302 Stainless Steel