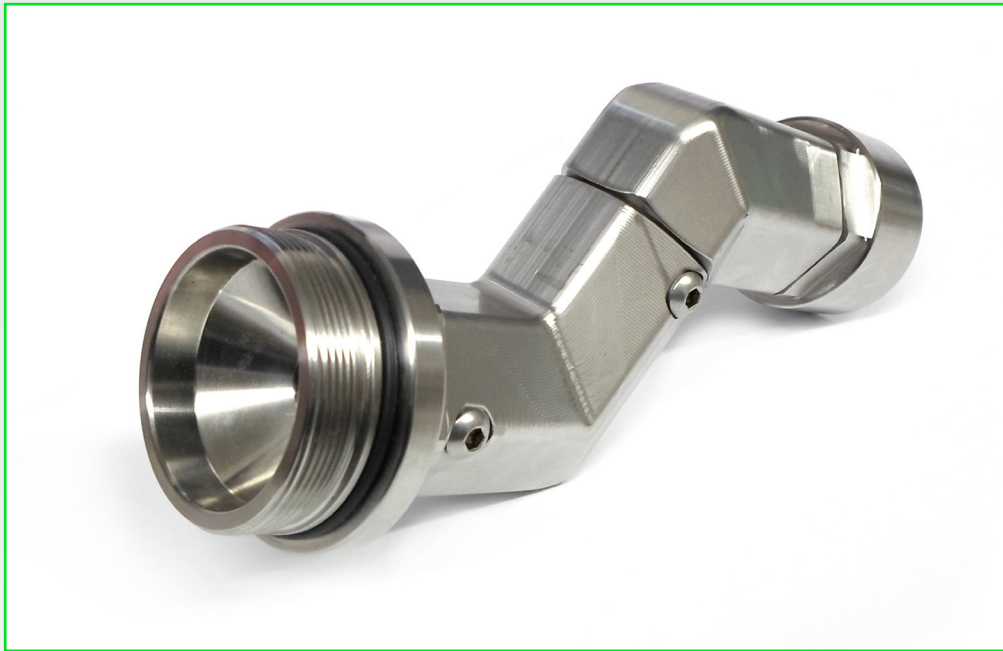




Z Swivels

Applications

These Z Swivels are suitable for petrol and diesel in low-pressure applications, hose reels, fuel nozzles and pump to hose connections.



Z Swivel

Materials

Item	Description	Material
1	Body	316 Stainless Steel or 6061 Aluminum
2	Washer	Phosphorous Bronze
3	Bush	Phosphorous Bronze
4	O-Ring	Viton
5	Ball Bearing	316 Stainless Steel

Features & Benefits

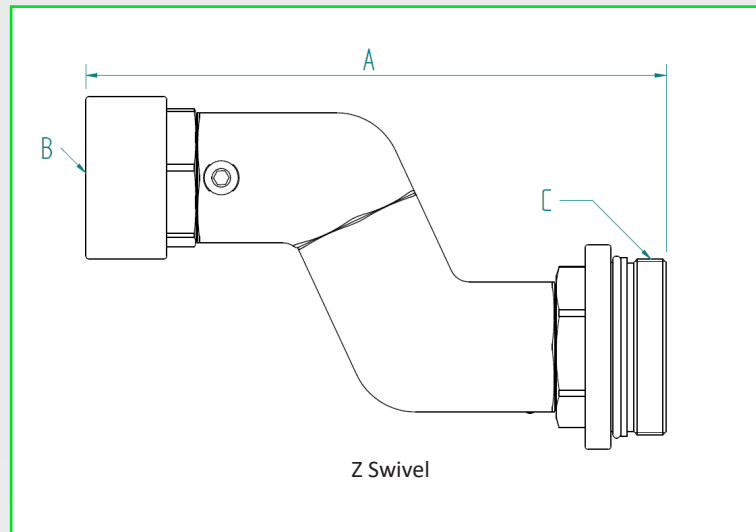
Designed for low pressure applications, these smooth action swivels allow hoses to align themselves for easy use; allowing for easier installation and greater operator comfort.

Product Information

- All products manufactured under ISO9001 standards.
- BSPT Female & Metric Male thread is standard quoted option.
- All aluminum Z-Swivels are lighter than steel and maintain conductivity.



Z Swivels



Dimensions (mm)

Part Code	Size	A (Length)	B (Female Thread)	C (Male Thread)
ZS108-ACM42V	1"	178	1" BSPT	M42 x 1.5
ZS110-6BM54V**	1 1/4"	179	1 1/4" BSPT	M54 X 1.5
ZS110-ABM54V	1 1/4"	179	1 1/4" BSPT	M54 X 1.5

Product Specification

Part Code	Mass kg (lb)	Min. Temp.* °C (°F)	Max. Temp.* °C (°F)	Max. Allowable Working Pressure psi (bar)	Body Material
ZS108-ACM42V	0.71 (1.5)	-20 (-4)	50 (122)	150 (10.5)	6061 Aluminium
ZS110-6BM54V**	1.85 (4)	-20 (-4)	50 (122)	150 (10.5)	316 Stainless Steel
ZS110-ABM54V	0.71 (1.5)	-20 (-4)	50 (122)	150 (10.5)	6061 Aluminium

* Temperature ranges are as per o-ring material.

** Made to order