



BV800 Series Ball Valve Instruction Manual

▲ WARNING

Failure to follow these instructions or to properly install and maintain this equipment could result in gas leakage, fire or explosion causing property damage and personal injury or death.

Oasis products must be installed, operated and maintained by trained and competent personnel in accordance with all applicable local codes, rules and regulations in addition to the Oasis Instructions.

Oasis Engineering Ltd. will not be held liable in such circumstances where installation, operation and maintenance procedures were performed by incompetent personnel resulting in improper assembly, unsafe operation, equipment damage or personal injury.

Oasis recommends that all service technicians should watch the Product Servicing Video before attempting to service this part.



Servicing Video

Oasis Engineering Ltd
129 Birch Avenue, Tauranga, New Zealand.
T: +64 7 928 3808
E: info@oasisNGV.com
W: www.OasisNGV.com



Instruction Manual

Warning!

High pressure gas and gas equipment can cause serious harm to both infrastructure and personnel if safety precautions are not followed.

Oasis recommends considering the use of the following PPE when working with high pressure along with any other site specific health and safety requirements:



Foot Protection



Hearing Protection



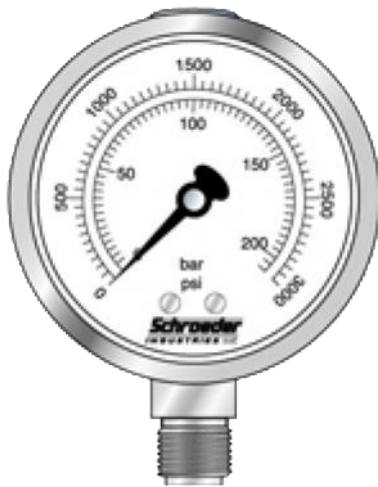
Safety Helmets



Hand Protection

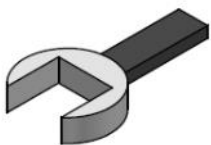


Safety Glasses



Ensure the system is clean of debris, vented and isolated before any installation or servicing work is carried out.

Tools Required



Spanner
(Wrenches)



Anti Seize Grease
- Swagelok Silver Goop
- Omega 99
- or similar



Spray bottle
(Snoop or soapy water)

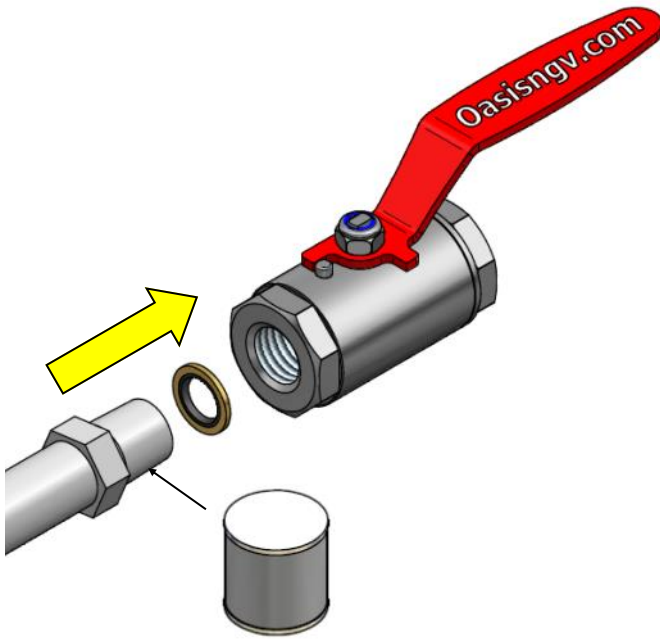


Yellow, Gas Rated, PTFE Thread Tape
- AW TITASEAL
- McMaster-Carr High-Density Thread Sealant Tape
- Blue-Monster gas-guard
- Or Similar

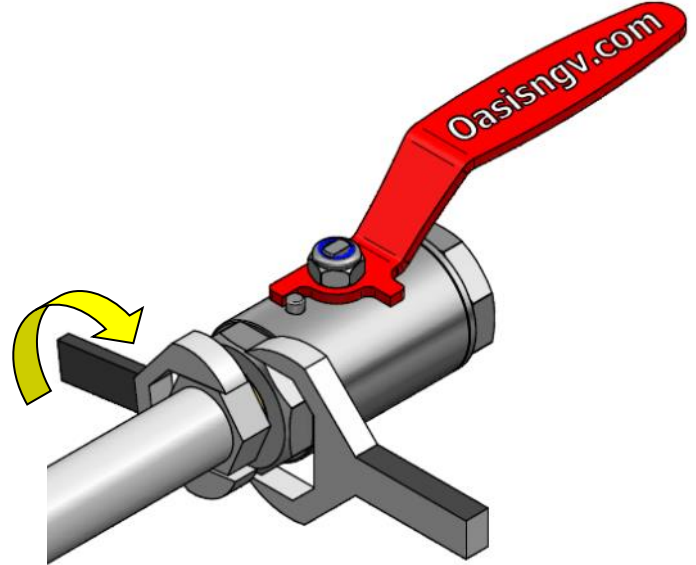


Anaerobic Thread Sealant
with PTFE (Optional)
- Loctite 567
- Swagelok SWAK
- Hernon Dripstop 940
- Gasoila FasSeal-ATS
- Or Similar

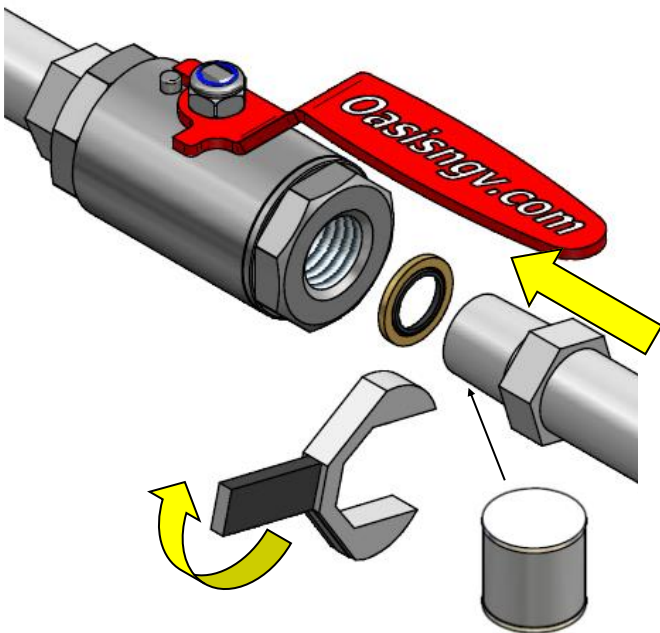
1. Place Dowty washer over fitting and apply anti-seize grease to thread.



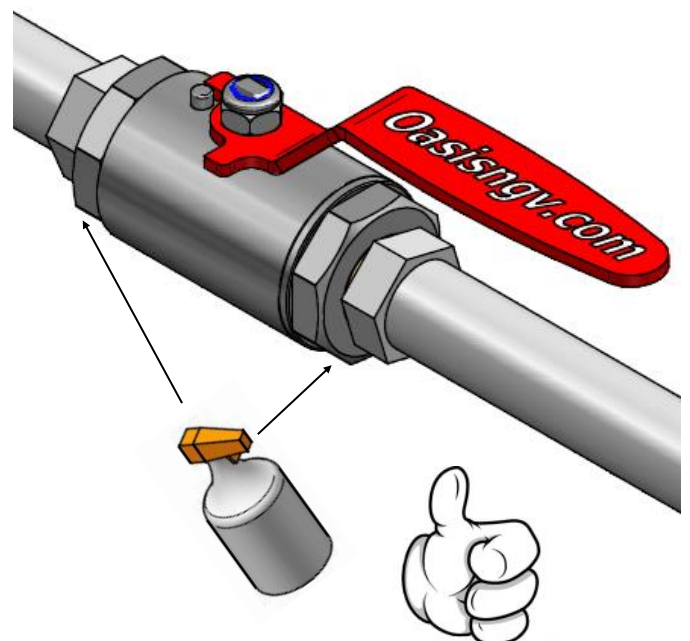
2. Tighten connection to the fitting suppliers recommended torque.



3. Repeat steps 1 and 2 with other end of valve.

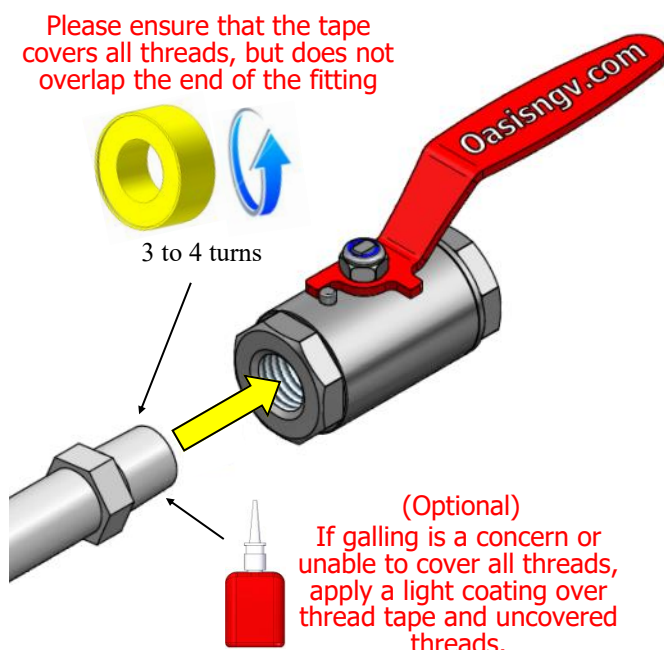


4. Installation complete, check for leaks with snoop or soapy water on first use.



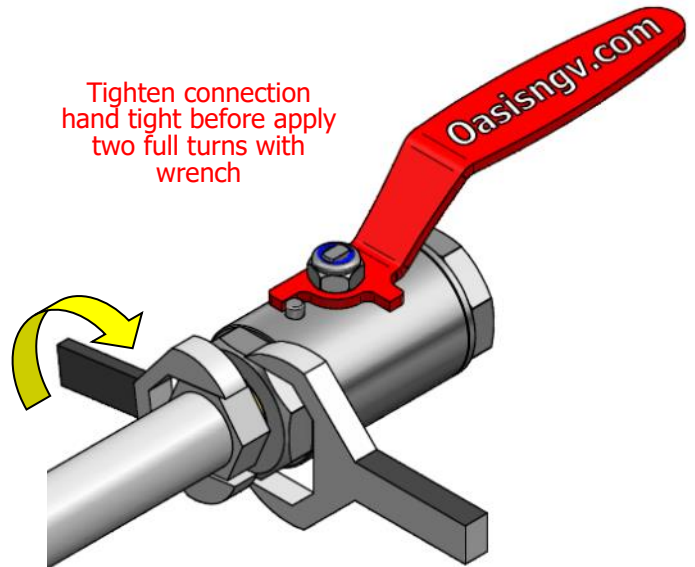
1. Wrap fitting with four turns of thread tape and apply anti seize grease.

Please ensure that the tape covers all threads, but does not overlap the end of the fitting

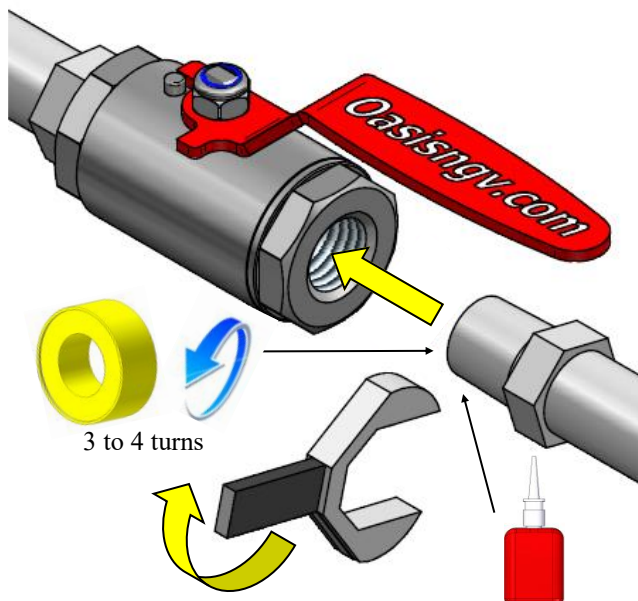


2. Join and tighten the connection.

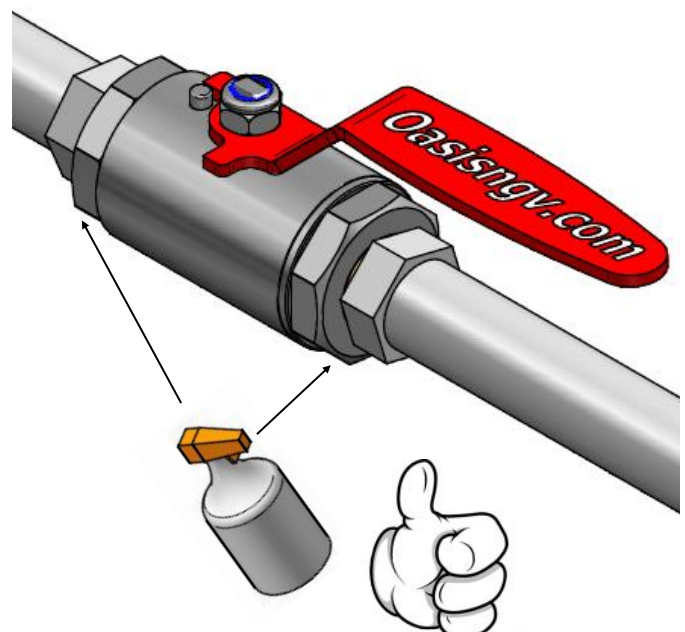
Tighten connection hand tight before apply two full turns with wrench



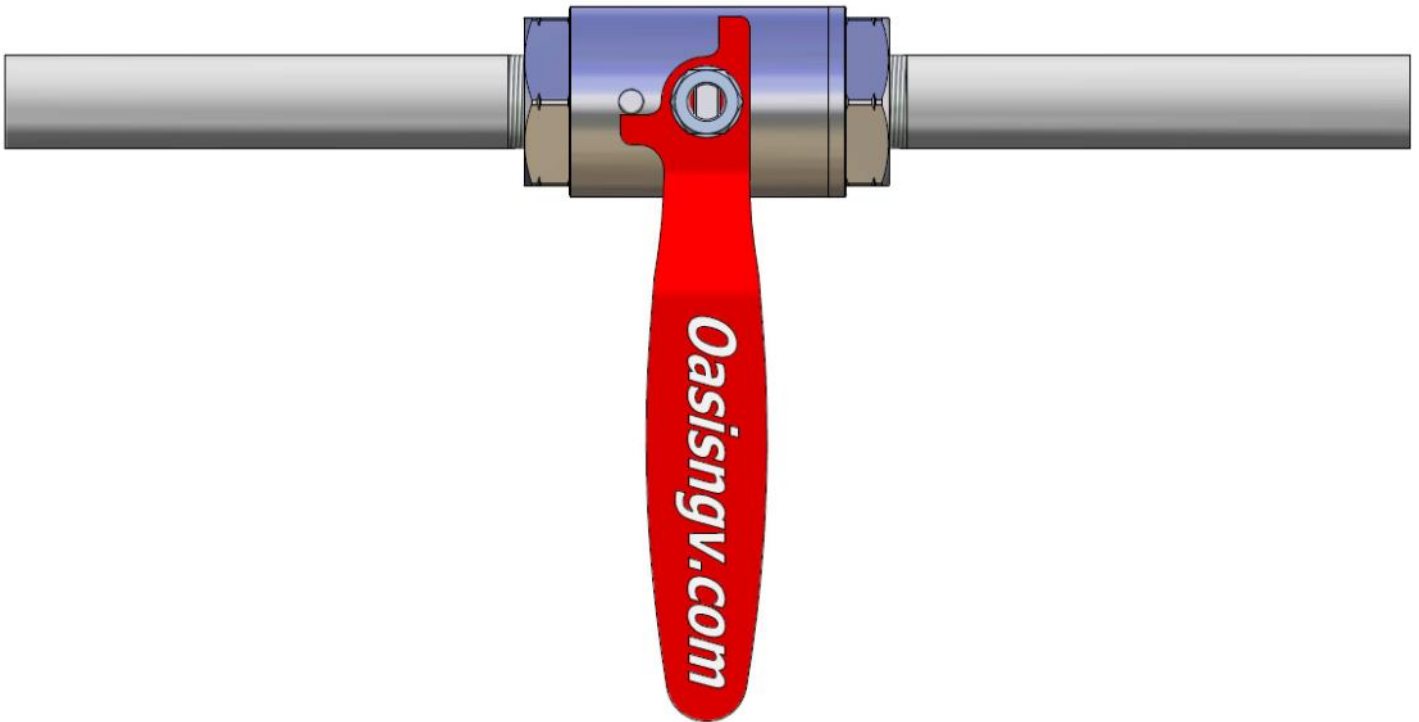
3. Repeat steps 1 and 2 with other end of valve.



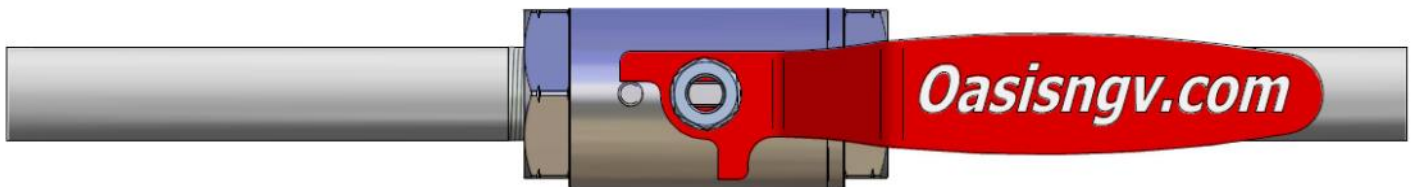
4. Installation complete, check for leaks with snoop or soapy water on first use.



1. Closed



2. Opened



Important: Actuate valve 4 times before use to ensure initial sealing.

Service Kit Parts



2 x Seats



1 x Stem



1 x Ball



1 x Gland



1 x Cap O-ring



1 x Cap Backup



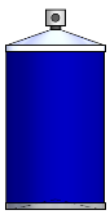
1 x Stem Nut



1 x Silicone

The Complete Oasis Seal Kit must be used

Tools Required



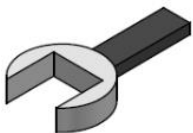
Cleaner
(Warm Soapy
Water or Similar)



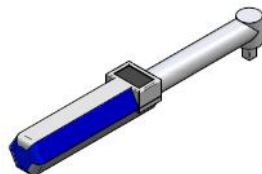
Pick Tool
TOOL-PICK
(Sold separately)



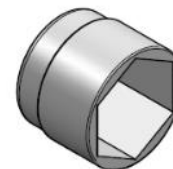
Anti Seize Grease
(Loctite 771 or
Similar)
For All Threads



Spanner
(Wrenches)



Torque Wrench

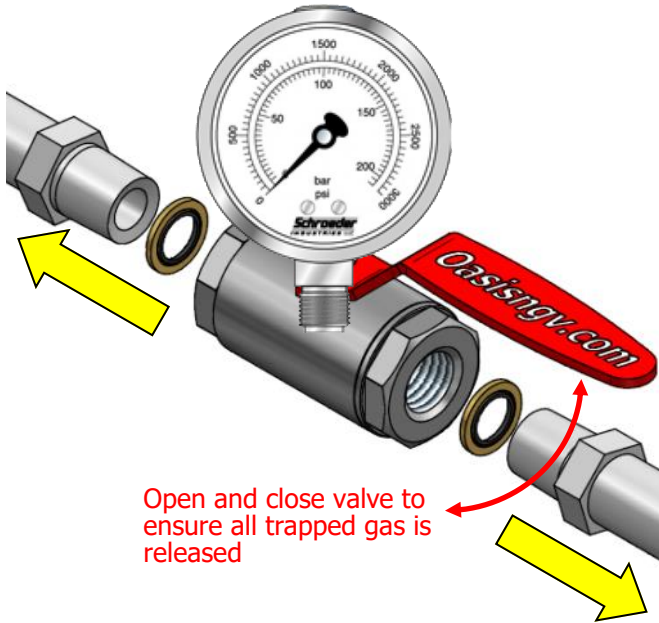


Sockets

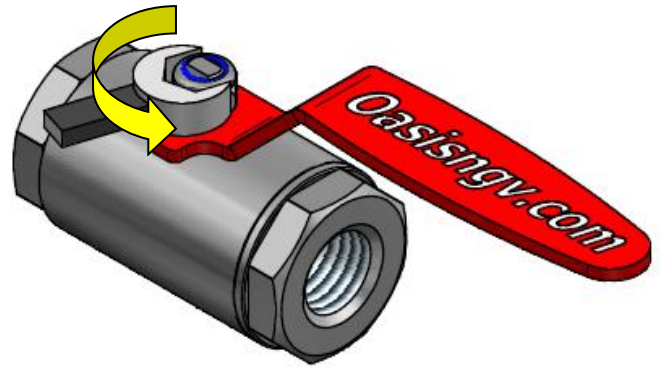


Oasis Plastic Tool
Part Number:
TOOL-BVASSY
(Sold separately)
or Similar

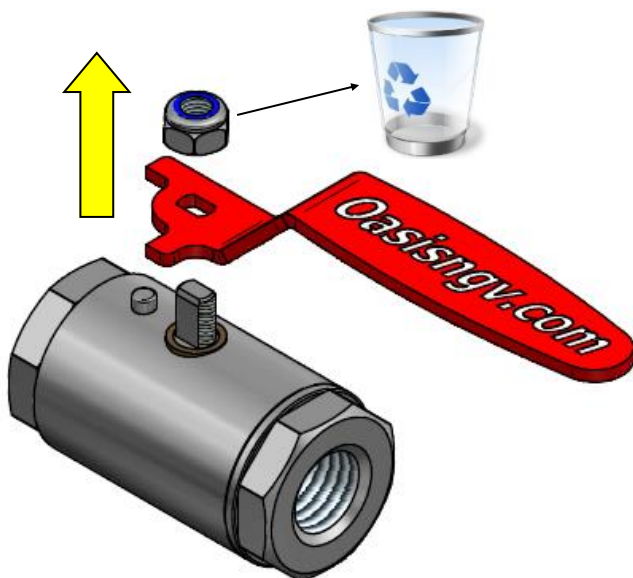
1. Vent gas and remove valve from pipework.



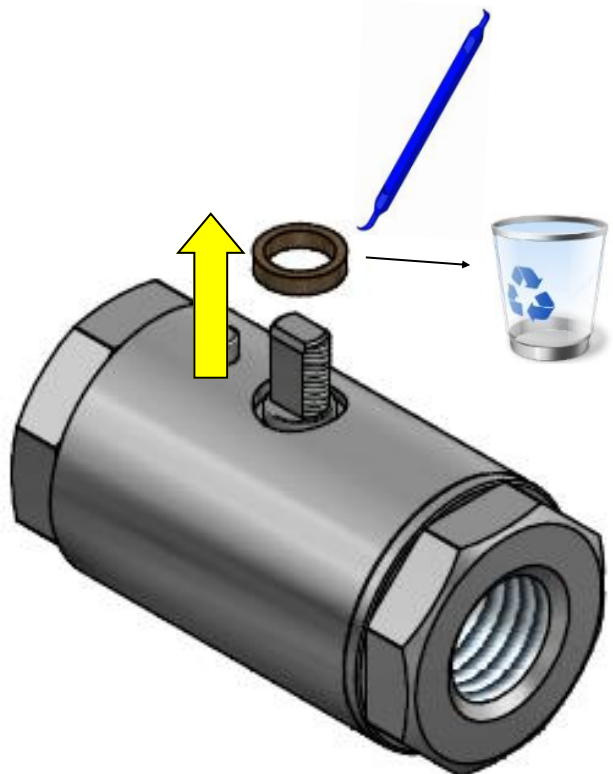
2. Unscrew stem nut.



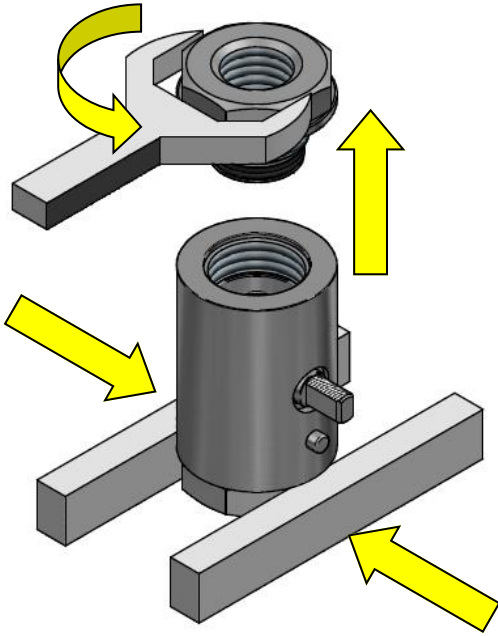
3. Remove handle and discard nut.



4. Discard gland.



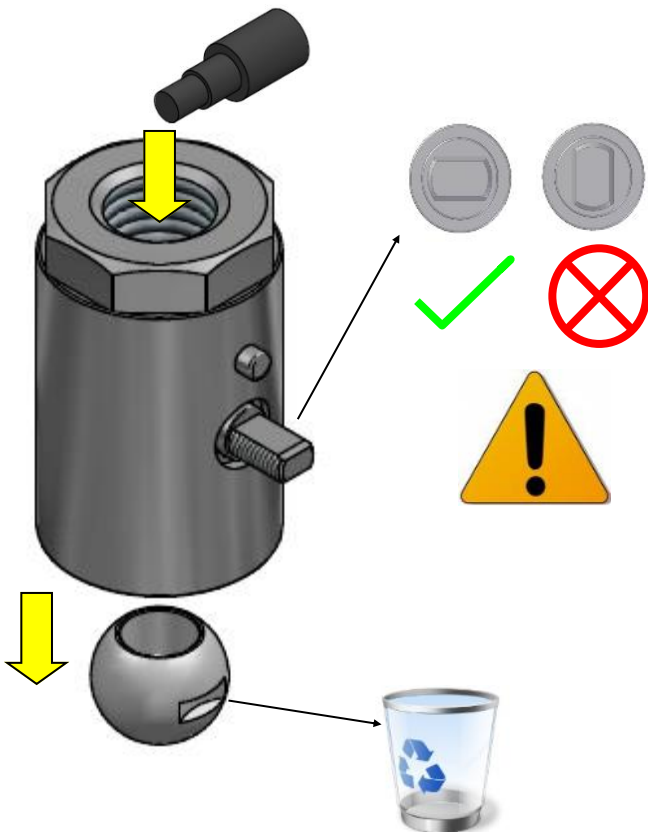
5. Place valve in vice and remove end cap.



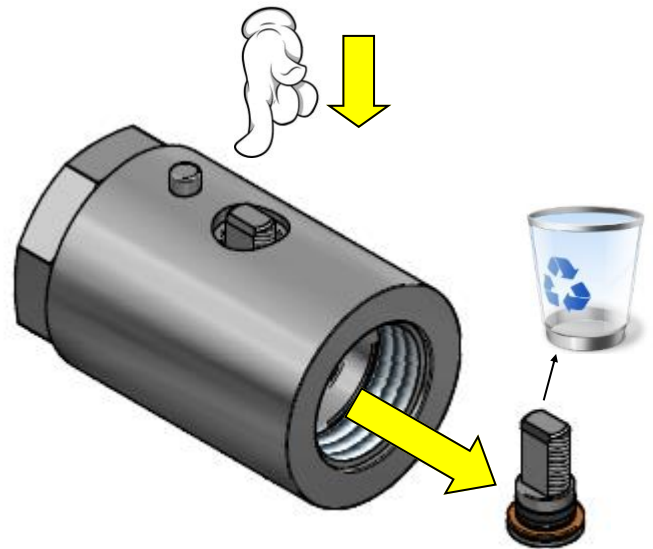
6. Discard first seat.



7. Discard ball.

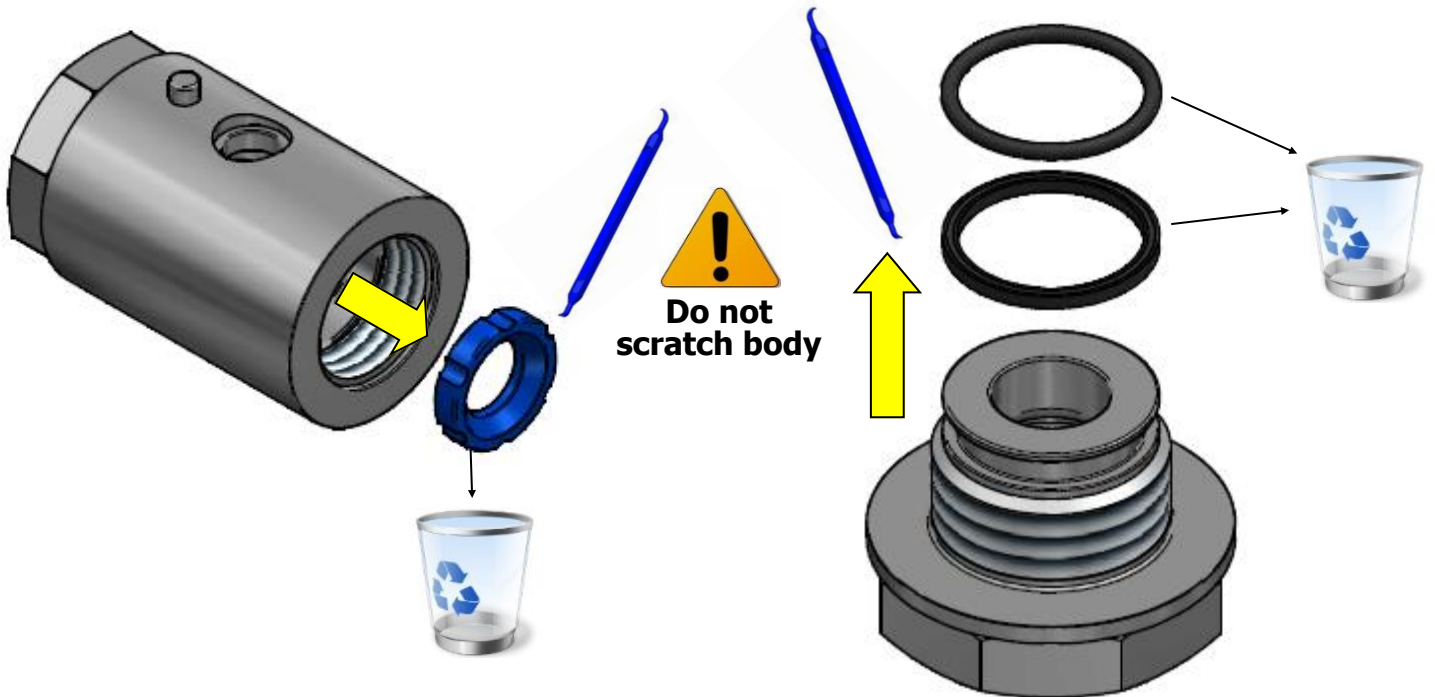


8. Discard stem.

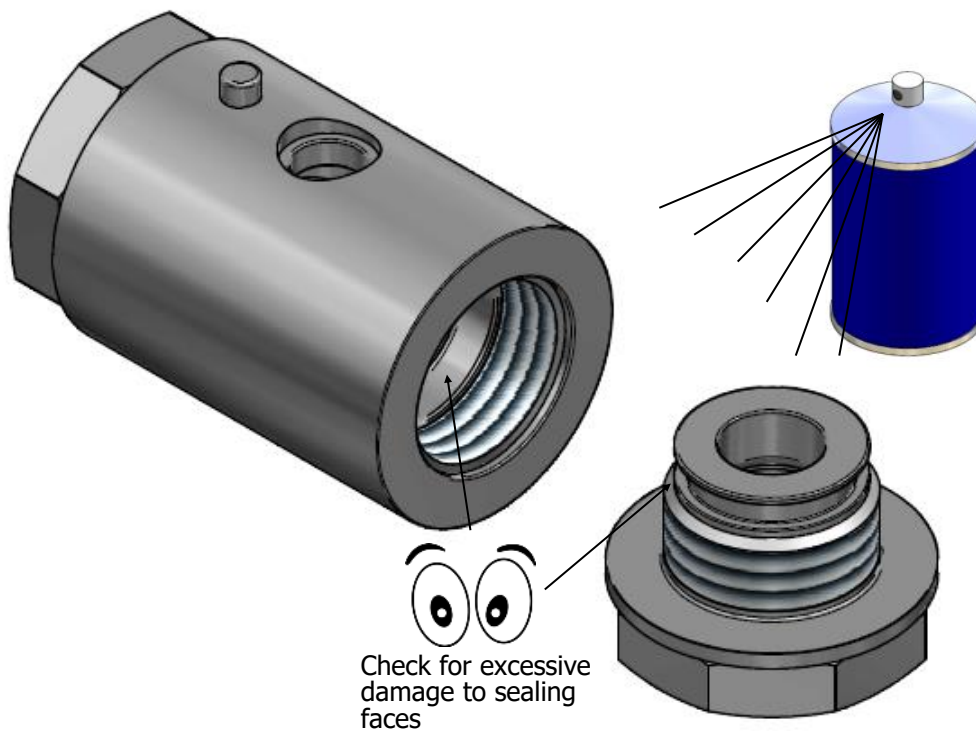


9. Discard second seat.

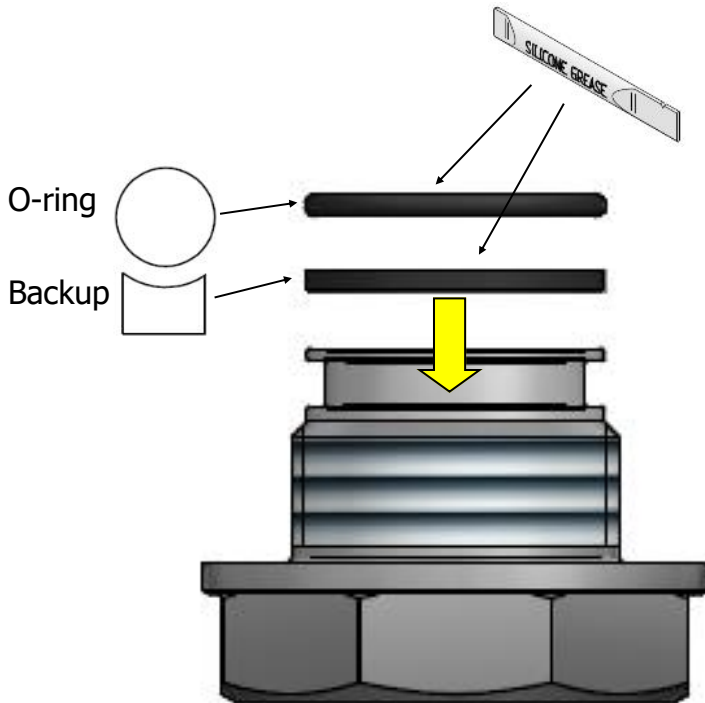
10. Discard end cap O-rings.



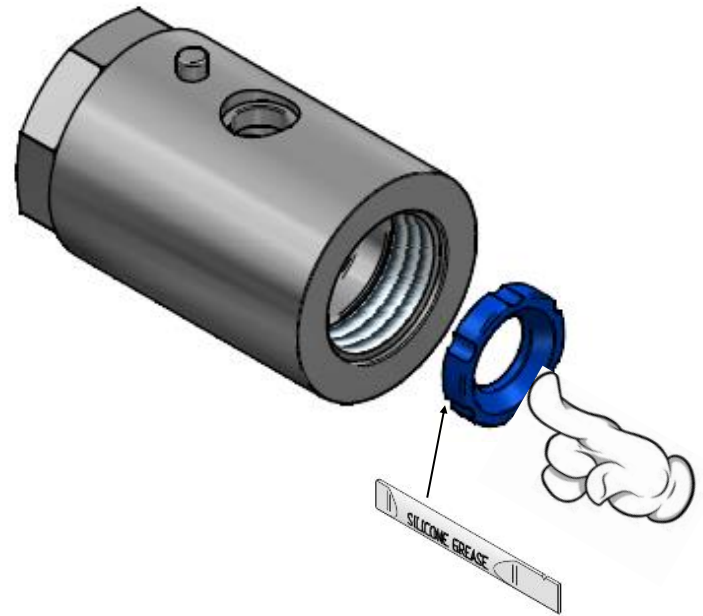
11. Clean components and inspect for damage.



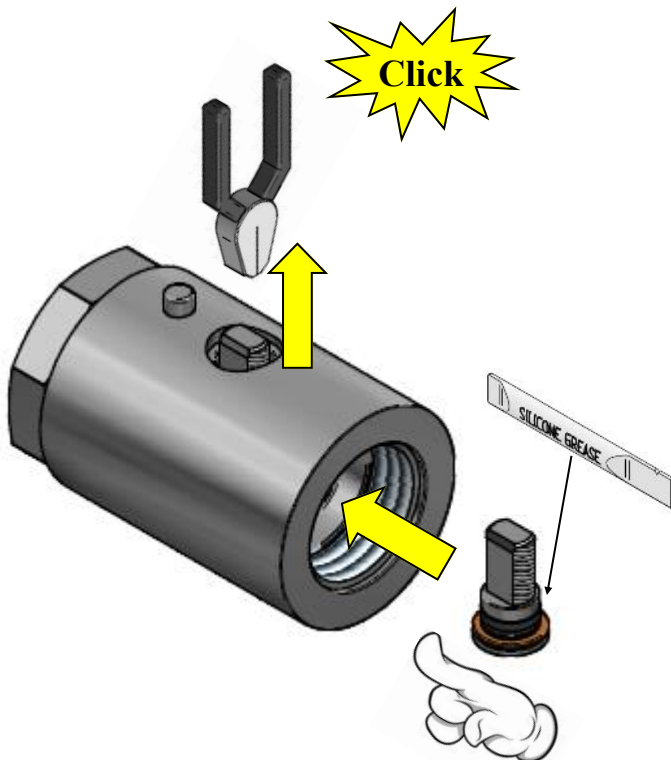
1. Fit end cap O-ring and backup.



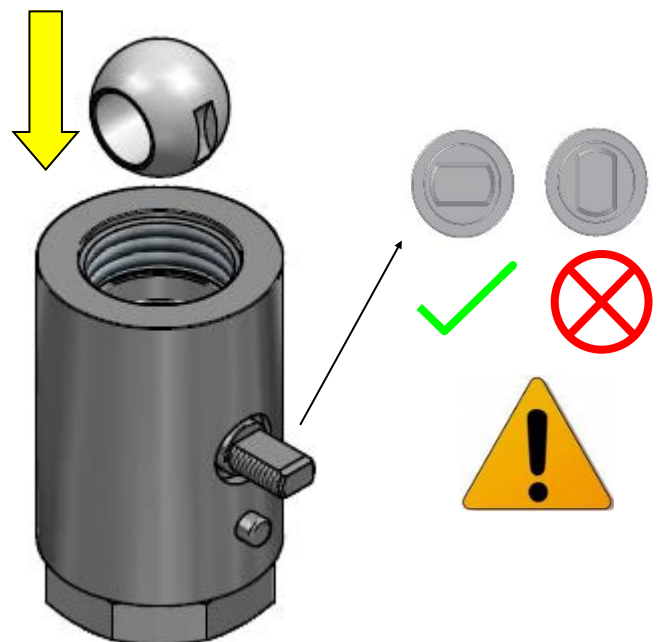
2. Insert first seat. If the seat has an O-ring, apply silicone grease and ensure it does not get pinched on install.



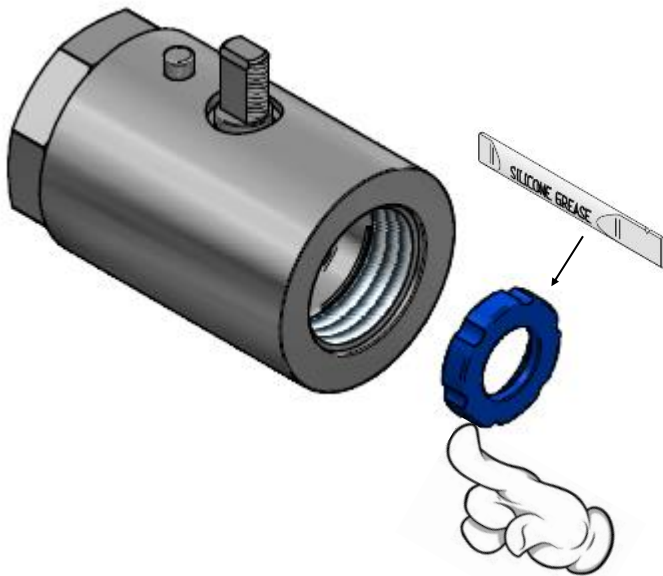
3. Insert stem



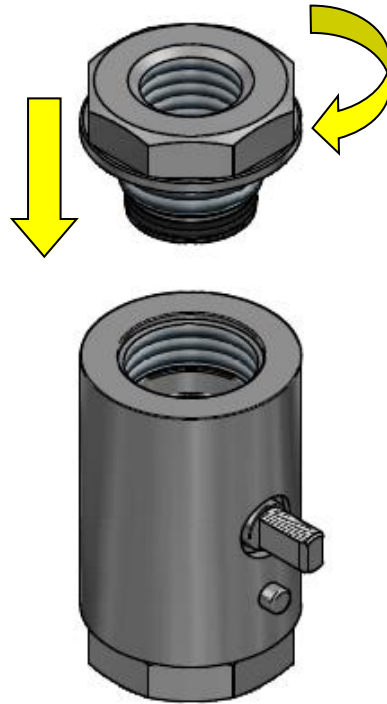
4. Insert ball.



5. Insert second seat. If the seat has an O-ring, apply silicone grease and ensure it does not get pinched on install.

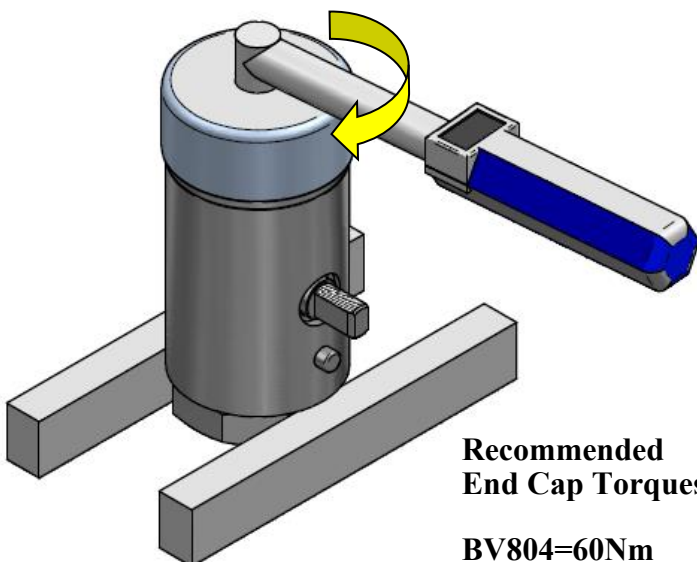


6. Screw end cap into body.



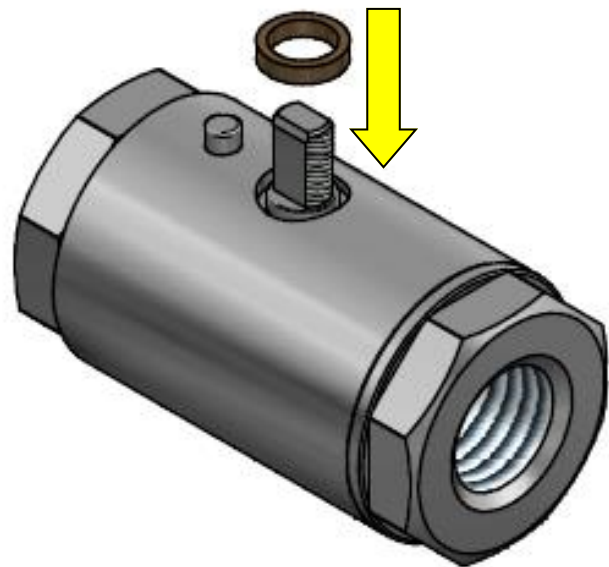
7. Torque end cap in vice.

8. Install gland.

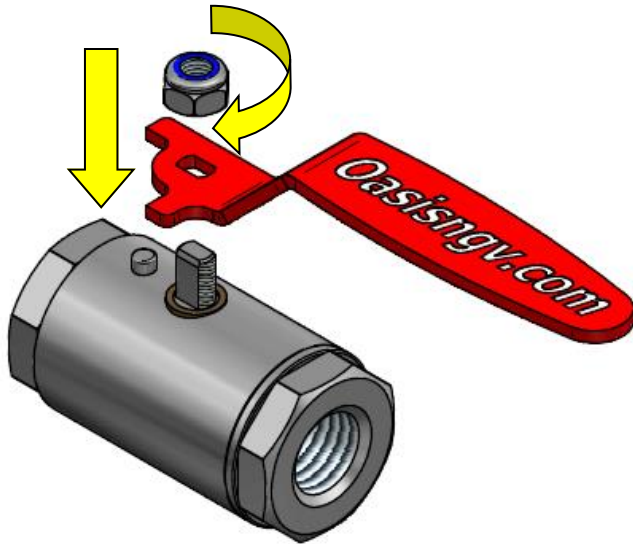


**Recommended
End Cap Torques:**

BV804=60Nm



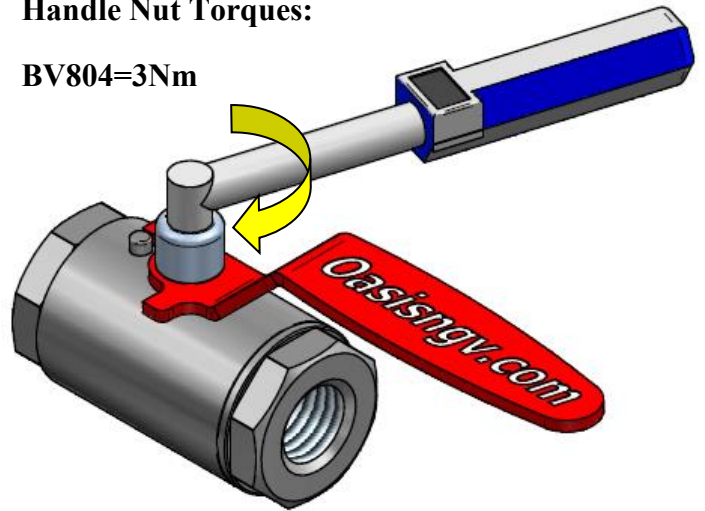
9. Install handle.



10. Torque handle.

**Recommended
Handle Nut Torques:**

BV804=3Nm



11. Servicing complete, follow installation instructions on page 3 for re-installation of product.

