



# 100 Series Sandwich Valves Ready to Mount

## Applications

Dispenser Manifolds, Priority Panels, Emergency Isolation and applications where easy service is required. Suitable for CNG, Helium, Bio-Gas, Nitrogen, Air and other gases on request.



SV104-4O6SDDN-0120 - Sandwich Valve

## Materials

Item	Description	Material
1	Valve Body	304 Stainless Steel
2	Valve Cap	304 Stainless Steel
3	Seat	Delrin
4	Ball	316 Stainless Steel
5	Stem	316 Stainless Steel
6	Thrust	Delrin

Item	Description	Material
7	O-ring	Nitrile
8	O-ring Backup	Nitrile
9	Gland	Delrin
10	Locking Tab	304 Stainless Steel
11	Half Nut	304 Stainless Steel
12	Sealing Surface O-ring	Nitrile

## Product Information

Includes valve, actuator mounting bracket, drive dog and screws.

Service kits are easily installed and readily available.

All products are manufactured under ISO 9001 accredited standards.

Mounting brackets and drive dogs designed to meet standard ISO 5211 pattern, allowing user multiple actuation options.

Handle options available on request.

3/4" valve tested to NGV4.6 option available on request.

CRN OC 19297.512346789OYTN.

Complies to PED 2014/68/EU.

More product information available online at [www.OasisNGV.com/resources](http://www.OasisNGV.com/resources).

## Features & Benefits

Designed for manifold or valve applications where minimizing service down time is critical.

Bolt-in, quick change design which fits into a manifold or uses end caps for your flow control requirements.

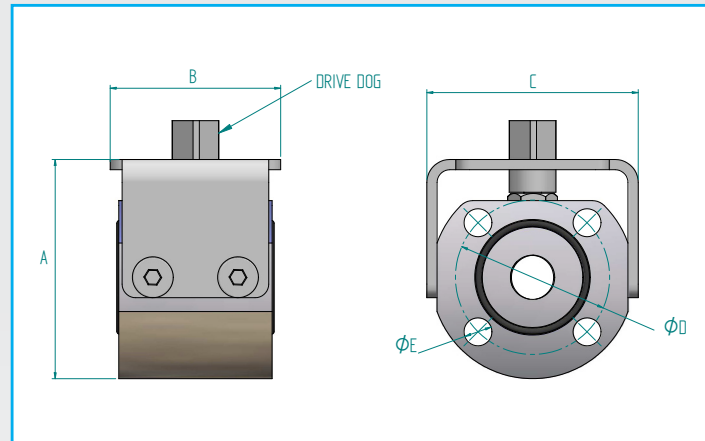
Using the proven Oasis floating ball technology the sandwich valve cycles for longer than any other known CNG ball valve.

Oasis can crate manifolds to your specifications. Talk to Oasis, Engineer to Engineer to craft a solution for you.



# 100 Series Sandwich Valves Ready to Mount

## Dimensions



## Dimensions (mm)

Part Code	Size	A	B	C	D	E	Bracket Bolt Pattern	Drive Dog Size
SV103-4O6SDDN-0120	3/8"	60	48	56	42	8.2	F03/F04	11
SV103-4O6SDDN-0130	3/8"	60	48	56	42	8.2	F03/F04	14
SV104-4O06LDDN-0120	1/2"	64.3	50	62	45.25	8.2	F04/F05	11
SV104-4O06LDDN-0130	1/2"	64.3	50	62	42.25	8.2	F04/F05	14
SV104-4O06LDDN-0140	1/2"	64.3	50	62	42.25	8.2	F04/F05	17
SV106-4O06LDDN-0130	3/4"	106.8	67	87.5	65	12.5	F07	14
SV106-4O06LDDN-0140	3/4"	106.8	67	87.5	65	12.5	F07	17
SV108-4O06LDDN-0140	1"	113.5	79	105	85	14.5	F07	17
SV108-4O06LDDN-0150	1"	113.5	79	105	85	14.5	F07	22

## Product Specifications

Part Code	Mass lb (kg)	Min. Operating Pressure bar (psi) *	Max. Operating Pressure bar (psi) **	Min. Temp. °F (°C)	Max. Temp. °F (°C)	Stem Open Torque ft-lb (Nm)	Max Cycles Before Rekit ^	Cv	Service Kit
SV103-4O6SDDN	1.3 (0.6)	34.5 (500)	410 (6000)	-40 (-40)	185 (85)	2.2 (3)	100,000	9.3	SV103-SK6SDDN
SV104-4O06LDDN	1.7 (0.8)	0.5 (7)	410 (6000)	-40 (-40)	185 (85)	10.3 (14)	100,000	12.3	SV104-SK6LDDN
SV106-4O06LDDN	6.2 (2.8)	0.5 (7)	410 (6000)	-40 (-40)	185 (85)	22.8 (31)	100,000	31	SV106-SK6LDDN
SV108-4O06LDDN	7.7 (3.5)	0.5 (7)	410 (6000)	-40 (-40)	185 (85)	32.4 (44)	100,000	44.5	SV108-SK6LDDN

\* Minimum system pressure the product will hold constant bubble tight seal.

\*\* Maximum pressure at which the product can constantly operate at.

^ It is recommended that the sandwich valve is re-kitted on or before the maximum number of allowable cycles.

We reserve the right to modify product specifications without prior notice.



# 100 Series Sandwich Valves Ready to Mount

## Servicing Tool

Tool required to complete servicing of sandwich valve. Designed to fit in a 3/4" or 1" socket for easy removal and installation.

## Product Information

Made from 316 Stainless Steel.

Sold Separately.

Tightening torque stamped on body.

## Dimensions: Imperial (mm)

Part Code	A AF	B	C AF
TOOL-SV106	0.79" (19.9)	1.57" (40)	0.75" (19)
TOOL-SV108	1" (25.4)	1.77" (45)	1" (25.4)

