

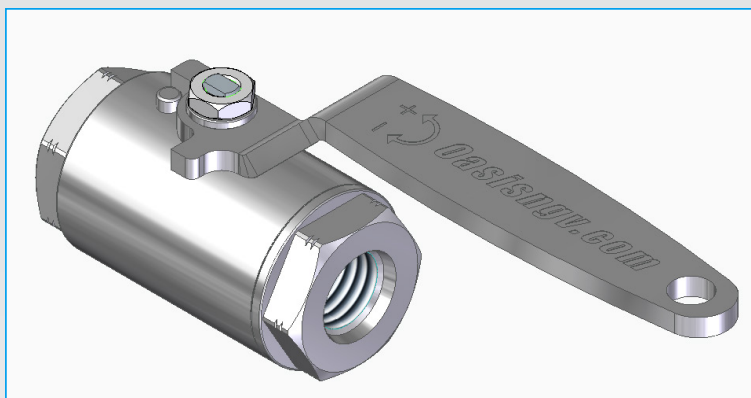


# 900 Series Ball Valves

## Applications

High Flow ball valves for Compressors, Dispensers, Priority Panels, Isolation valves, Gas storage.

Suitable for Hydrogen, CNG, Biogas, Helium, Nitrogen.



BV904-6S4PCDW-G000

## Materials

| Item | Part          | Material             |
|------|---------------|----------------------|
| 1    | Body & Cap    | 316 Stainless Steel  |
| 2    | Ball          | 316 Stainless Steel  |
| 3    | Stem          | XM19 Stainless Steel |
| 4    | Seats         | B16 PEEK             |
| 5    | Thrust washer | Delrin               |

| Item | Part         | Material            |
|------|--------------|---------------------|
| 6    | Gland        | Delrin              |
| 7    | O-rings      | Viton               |
| 8    | Backup rings | Nitrile             |
| 9    | Handle       | 304 Stainless Steel |

## Product Information

Type tested to ISO23826.

Complies with PED 2014/68/EU.

All products are manufactured to ISO 9001 standards.

SAE threads conform to SAE J1926.

BSP threads conform to ISO 228.

Other connections available on request.

## Features & Benefits

Easy to service, kits readily available.

Quarter turn handle.

Anti blow-out stem.

Manufactured from certified bar stock.

Lockout system available to prevent accidental operation of valve.

Actuated options available.

TPED version available.



## 900 Series Ball Valves

### SAE Product Specification

| Part Code          | Size<br>(DN)<br>Inch | Mass<br>lb (kg) | Lowest<br>Operating<br>Pressure<br>bar (psi) * | Working<br>Pressure<br>(WP)<br>bar (psi) ** | Test<br>Pressure<br>(PT)<br>bar (psi) *** | Min.<br>Temp.<br>°F (°C) | Max<br>Temp.<br>°F (°C) | Cycles<br>Before<br>Rekit <sup>^</sup> | Stem Open<br>Torque<br>ft-lb (Nm) <sup>^^</sup> | Cv   | Service Kit  |
|--------------------|----------------------|-----------------|--|---|---|--------------------------|-------------------------|--|---|------|--------------|
| BV904-6S4PCDW-G000 | 1/2"                 | 1.5 (0.7)       | 6.9 (100)                                      | 385 (5584)                                  | 462 (6700)                                | -40 (-40)                | 149 (65)                | 2000                                   | 14.7 (20)                                       | 13.1 | BV900-SK1-S4 |

### BSP Product Specification

| Part Code          | Size<br>(DN)<br>Inch | Mass<br>lb (kg) | Lowest<br>Operating<br>Pressure<br>bar (psi) * | Working<br>Pressure<br>(WP)<br>bar (psi) ** | Test<br>Pressure<br>(PT)<br>bar (psi) *** | Min.<br>Temp.<br>°F (°C) | Max<br>Temp.<br>°F (°C) | Cycles<br>Before<br>Rekit <sup>^</sup> | Stem Open<br>Torque<br>ft-lb (Nm) <sup>^^</sup> | Cv   | Service Kit |
|--------------------|----------------------|-----------------|--|---|---|--------------------------|-------------------------|--|---|------|-------------|
| BV904-6B4PCDW-G000 | 1/2"                 | 1.5 (0.7)       | 6.9 (100)                                      | 385 (5584)                                  | 462 (6700)                                | -40 (-40)                | 149 (65)                | 2000                                   | 14.7 (20)                                       | 13.1 | BV900-SK1   |

\* Lowest settled gas pressure for which the ball valve is designed. This is the minimum pressure that the product will hold constant bubble tight seal.

\*\* Settled pressure of a compressed gas at a uniform reference temperature of 15°C in a full pressure receptacle for which the valve is intended.

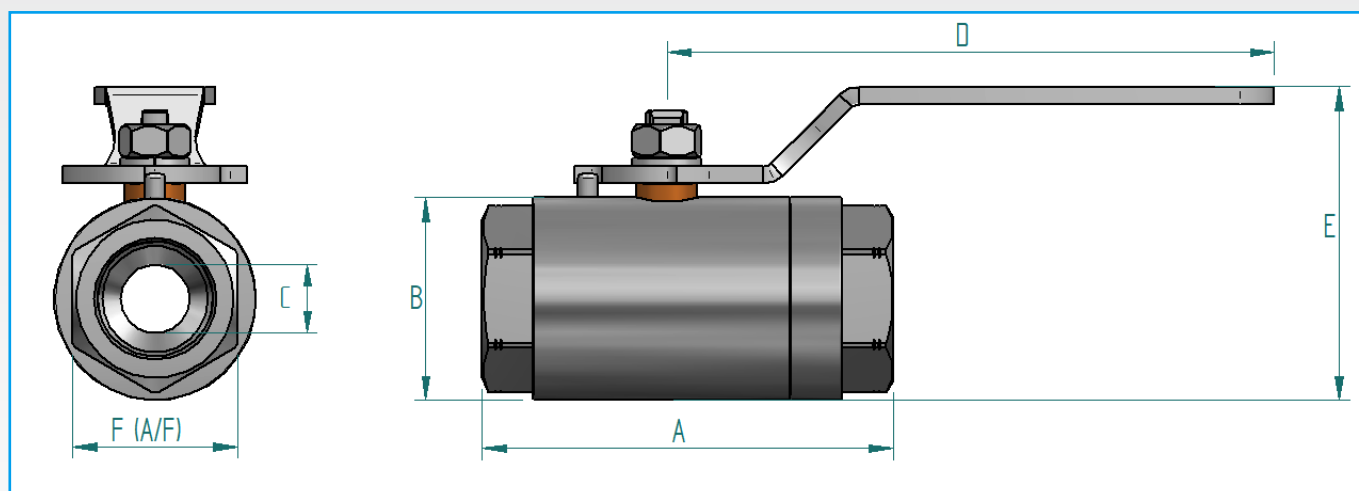
\*\*\* Minimum pressure applied to the valve during testing

<sup>^</sup> The temperature's and cycles stated depend on the system conditions and may not be achievable in all situations.

Contact Oasis for further information.

<sup>^^</sup> Maximum opening torque at maximum operating pressure.

### Product Dimensions



### SAE Product Dimensions - Inch(mm)

| Part Code          | Size (DN)<br>Inch | A        | B        | Ø C     | D         | E        | Port Thread       | F (A/F)    |
|--------------------|-------------------|----------|----------|---------|-----------|----------|-------------------|------------|
| BV904-6S4PCDW-G000 | 1/2"              | 3 (75.5) | 1.6 (40) | .5 (13) | 5.7 (144) | 2.7 (69) | 3/4-16 SAE FEMALE | 1.3 (33.4) |

### BSP Product Dimensions - Inch(mm)

| Part Code          | Size (DN)<br>Inch | A        | B        | Ø C     | D         | E        | Port Thread | F (A/F)    |
|--------------------|-------------------|----------|----------|---------|-----------|----------|-------------|------------|
| BV904-6B4PCDW-G000 | 1/2"              | 3 (75.5) | 1.6 (40) | .5 (13) | 5.7 (144) | 2.7 (69) | G1/2 FEMALE | 1.3 (33.4) |

Other sizes and fittings available on request, contact Oasis for further information.

We reserve the right to modify product specifications without prior notice.