

# 900 Series Ball Valves with Lockout Kit

## Applications

High Flow ball valves for Compressors, Dispensers, Priority Panels, Isolation valves, Gas storage.

Suitable for Hydrogen, CNG, Biogas, Helium, Nitrogen and other gases on enquiry.



BV908-6S6PCDW-6000

## Materials

Item	Part	Material
1	Body & Cap	316 Stainless Steel
2	Ball	316 Stainless Steel
3	Stem	XM19 Stainless Steel (BV902/903/904 only)
		316 Stainless Steel (BV906/908 only)
4	Seats	B16 PEEK

Item	Part	Material
5	Thrust washer	Delrin
6	Gland	Delrin
7	O-rings	Viton
8	Backup rings	Nitrile
9	Handle	304 Stainless Steel
10	Lockout plate & Carabiner	304 Stainless Steel

## Product Information

Type tested to ISO23826.

Complies with PED 2014/68/EU.

Pi Marked.

All products are manufactured to ISO 9001 standards.

NPT threads conform to ASME B1.20.1.

BSP threads conform to ISO 228.

SAE threads conform to SAE J1926.

Other connections available on request.

## Features & Benefits

Range of end connections from 1/4" to 1" nominal.

Easy to service, kits readily available.

Quarter turn handle.

Anti blow-out stem.

Manufactured from certified bar stock.

Lockout system to prevent accidental operation of valve.

Actuated options available.

TPED Pi Marked version available.

# 900 Series Ball Valves with Lockout Kit

## NPT Product Specification

Part Code	Size	Mass lb (kg)	Lowest Operating Pressure bar (psi) *	Working Pressure (WP) bar (psi) **	Test Pressure (PT) bar (psi) ***	Min. Temp. °F (°C)	Max Temp. °F (°C)	Cycles Before Rekit <sup>^</sup>	Stem Open Torque ft-lb (Nm) <sup>^^</sup>	Cv	Service Kit
BV902-6N4PCDW-6000	1/4"	1.5 (0.7)	6.9 (100)	385 (5584)	462 (6700)	-40 (-40)	149 (65)	2000	14.7 (20)	2.8	BV900-SK1
BV904-6N4PCDW-6000	1/2"	1.5 (0.7)	6.9 (100)	385 (5584)	462 (6700)	-40 (-40)	149 (65)	2000	14.7 (20)	13.1	BV900-SK1

## SAE Product Specification

Part Code	Size (DN) Inch (mm)	Mass lb (kg)	Lowest Operating Pressure bar (psi) *	Working Pressure (WP) bar (psi) **	Test Pressure (PT) bar (psi) ***	Min. Temp. °F (°C)	Max Temp. °F (°C)	Cycles Before Rekit <sup>^</sup>	Stem Open Torque ft-lb (Nm) <sup>^^</sup>	Cv	Service Kit
BV904-6S4PCDW-6000	1/2"	1.5 (0.7)	6.9 (100)	385 (5584)	462 (6700)	-40 (-40)	149 (65)	2000	14.7 (20)	13.1	BV900-SK1-S4

## BSPP Product Specification

Part Code	Size (DN) Inch (mm)	Mass lb (kg)	Lowest Operating Pressure bar (psi) *	Working Pressure (WP) bar (psi) **	Test Pressure (PT) bar (psi) ***	Min. Temp. °F (°C)	Max Temp. °F (°C)	Cycles Before Rekit <sup>^</sup>	Stem Open Torque ft-lb (Nm) <sup>^^</sup>	Cv	Service Kit
BV902-6B4PCDW-6000	1/4"	1.5 (0.7)	6.9 (100)	385 (5584)	462 (6700)	-40 (-40)	149 (65)	2000	14.7 (20)	2.8	BV900-SK1
BV904-6B4PCDW-6000	1/2"	1.5 (0.7)	6.9 (100)	385 (5584)	462 (6700)	-40 (-40)	149 (65)	2000	14.7 (20)	13.1	BV900-SK1

\* Lowest settled gas pressure for which the ball valve is designed. This is the minimum pressure that the product will hold constant bubble tight seal.

\*\* Settled pressure of a compressed gas at a uniform reference temperature of 15°C in a full pressure receptacle for which the valve is intended.

\*\*\* Minimum pressure applied to the valve during testing

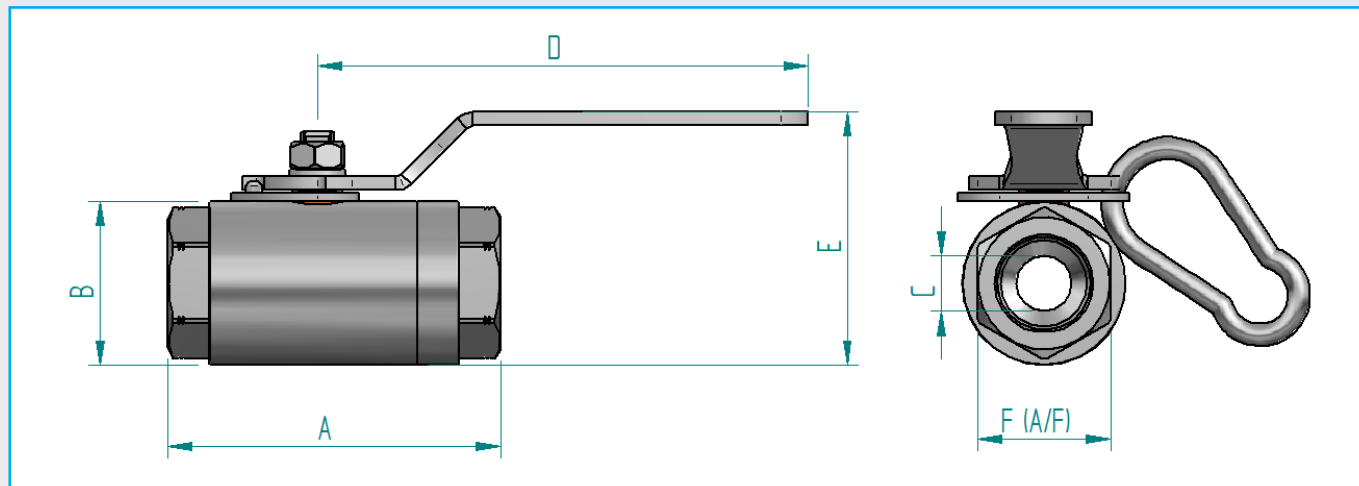
<sup>^</sup> The temperature's and cycles stated depend on the system conditions and may not be achievable in all situations.

Contact Oasis for further information.

<sup>^^</sup> Maximum opening torque at maximum operating pressure.

# 900 Series Ball Valves with Lockout Kit

## Product Dimensions



## NPT Product Dimensions - Inch(mm)

Part Code	Size	A	B	Ø C	D	E	Port Thread	F (A/F)
BV902-6N4PCDW-6000	1/4"	3 (75.5)	1.6 (40)	.44 (11.2)	5.7 (144)	2.7 (69)	1/4" NPT FEMALE	1.3 (33.4)
BV904-6N4PCDW-6000	1/2"	3 (75.5)	1.6 (40)	.5 (13)	5.7 (144)	2.7 (69)	1/2" NPT FEMALE	1.3 (33.4)

## SAE Product Dimensions - Inch(mm)

Part Code	Size (DN) Inch (mm)	A	B	Ø C	D	E	Port Thread	F (A/F)
BV904-6S4PCDW-6000	1/2"	3 (75.5)	1.6 (40)	.5 (13)	5.7 (144)	2.7 (69)	3/4-16 SAE FEMALE	1.3 (33.4)

## BSPP Product Dimensions - Inch(mm)

Part Code	Size (DN) Inch (mm)	A	B	Ø C	D	E	Port Thread	F (A/F)
BV902-6B4PCDW-6000	1/4"	3 (75.5)	1.6 (40)	.44 (11.8)	5.7 (144)	2.7 (69)	G1/4 FEMALE	1.3 (33.4)
BV904-6B4PCDW-6000	1/2"	3 (75.5)	1.6 (40)	.5 (13)	5.7 (144)	2.7 (69)	G1/2 FEMALE	1.3 (33.4)

Other sizes and fittings available on request, contact Oasis for further information.