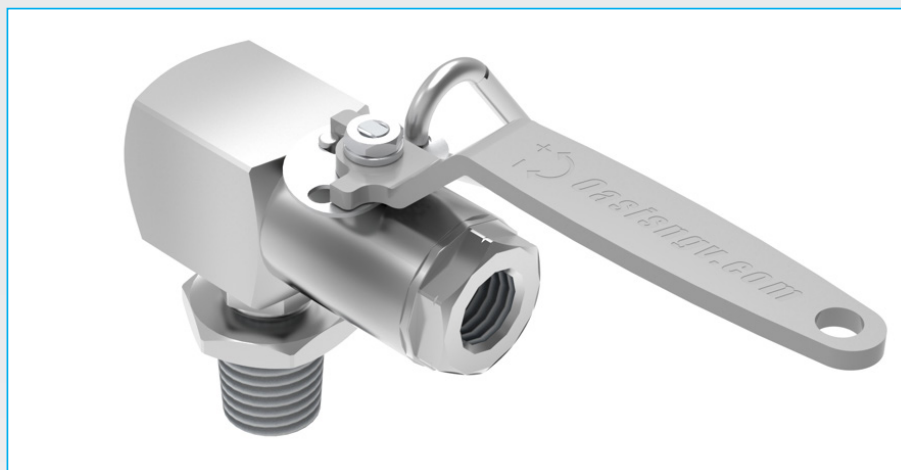


900 Series Cylinder Ball Valves with Lockout Kit

Applications

High Flow cylinder valves for bulk gas cylinder storage stacks.

Suitable for Hydrogen, CNG, Biogas, Helium, Nitrogen and other gases on enquiry.



TH904-63B92T0-1000

Materials

| Item | Part | Material |
|------|---------------|----------------------|
| 1 | Body & Cap | 316 Stainless Steel |
| 2 | Ball | 316 Stainless Steel |
| 3 | Stem | XM19 Stainless Steel |
| 4 | Seats | B16 PEEK |
| 5 | Thrust washer | Delrin |

| Item | Part | Material |
|------|---------------------------|---------------------|
| 6 | Gland | Delrin |
| 7 | O-rings | Viton |
| 8 | Backup rings | Nitrile |
| 9 | Handle, | 304 Stainless Steel |
| 10 | Locking plate & Carabiner | 304 Stainless Steel |

Product Information

Type tested to ISO23826.

Complies with PED 2014/68/EU.

All products are manufactured to ISO 9001 standards.

NPT threads conform to ASME B1.20.1.

SAE threads conform to SAE J1926.

25E (W28.8) threads conform to ISO11363-2

UNF18 (1 1/8-12 UNF) threads conform to ASME B1.1.

Other end cap and cylinder fitting options available on request.

Features & Benefits

Available with 25E or UNF18 male cylinder connection.

Easy to service, kits readily available.

Quarter turn handle.

Anti blow-out stem.

Includes a live PRD port, PRD not included.

Manufactured from certified bar stock.

Lockout system to prevent accidental operation of valve.

TPED Pi Marked version available.

900 Series Cylinder Ball Valves with Lockout Kit

NPT Product Specification

| Part Code | Size | Mass lb (kg) | Lowest Operating Pressure bar (psi) * | Working Pressure (WP) bar (psi) ** | Test Pressure (PT) bar (psi) *** | Min. Temp. °F (°C) | Max Temp. °F (°C) | Cycles Before Rekit [^] | Stem Open Torque ft-lb (Nm) ^{^^} | Cv | Service Kit |
|--------------------|------|-----------------|--|---|---|--------------------------|-------------------------|--|---|-----|-------------|
| TH904-63B82P0-9000 | 1/2" | 2.6 (1.2) | 6.9 (100) | 385 (5584) | 462 (6700) | -40 (-40) | 149 (65) | 2000 | 14.7 (20) | 6.7 | TH904-SK1 |
| TH904-63B92P0-9000 | 1/2" | 2.6 (1.2) | 6.9 (100) | 385 (5584) | 462 (6700) | -40 (-40) | 149 (65) | 2000 | 14.7 (20) | 6.7 | TH904-SK2 |

SAE Product Specification

| Part Code | Size | Mass lb (kg) | Lowest Operating Pressure bar (psi) * | Working Pressure (WP) bar (psi) ** | Test Pressure (PT) bar (psi) *** | Min. Temp. °F (°C) | Max Temp. °F (°C) | Cycles Before Rekit [^] | Stem Open Torque ft-lb (Nm) ^{^^} | Cv | Service Kit |
|--------------------|------|-----------------|--|---|---|--------------------------|-------------------------|--|---|-----|-------------|
| TH904-62B82P0-9000 | 1/2" | 2.6 (1.2) | 6.9 (100) | 385 (5584) | 462 (6700) | -40 (-40) | 149 (65) | 2000 | 14.7 (20) | 6.7 | TH904-SK1-S |
| TH904-62B92P0-9000 | 1/2" | 2.6 (1.2) | 6.9 (100) | 385 (5584) | 462 (6700) | -40 (-40) | 149 (65) | 2000 | 14.7 (20) | 6.7 | TH904-SK2-S |

* Lowest settled gas pressure for which the ball valve is designed. This is the minimum pressure that the product will hold constant bubble tight seal.

** Settled pressure of a compressed gas at a uniform reference temperature of 15°C in a full pressure receptacle for which the valve is intended.

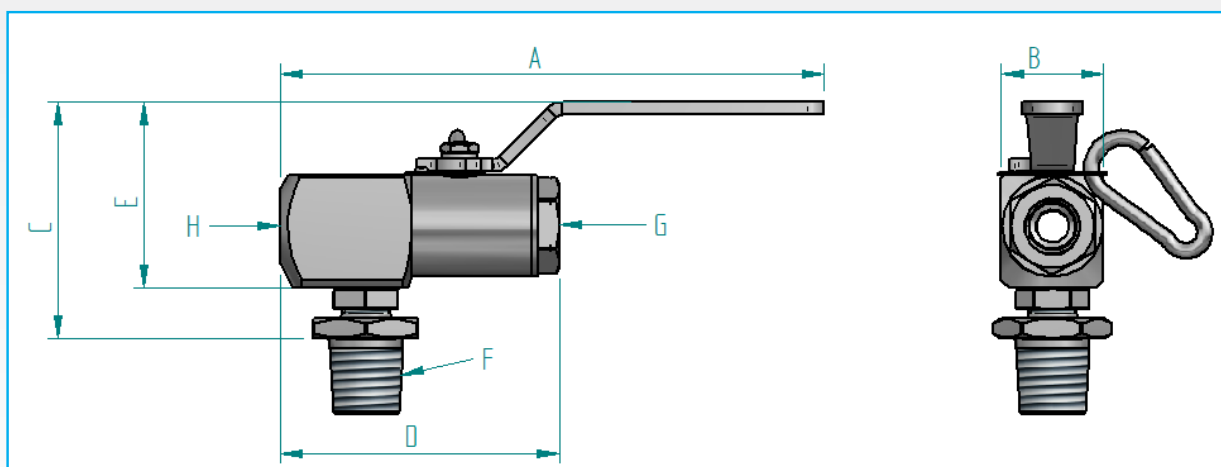
*** Minimum pressure applied to the valve during testing

[^] The temperature's and cycles stated depend on the system conditions and may not be achievable in all situations.

Contact Oasis for further information.

^{^^} Maximum opening torque at maximum operating pressure.

Dimensions:



Dimensions - Inch (mm)

| Part Code | A | B | C | D | E |
|-------------|--------------|-------------|-------------|--------------|-------------|
| TH904 (all) | 8.5" (215mm) | 1.6" (41mm) | 3.7" (93mm) | 4.3" (110mm) | 2.9" (73mm) |

Connection Specifications

| Part Code | F (CYLINDER) MALE THREAD | G (END CAP) FEMALE THREAD | H (PRD/LIVE PORT) FEMALE THREAD | PRD TYPE |
|--------------------|--------------------------------|---------------------------------|---------------------------------------|---------------------------------|
| TH904-63B82P0-9000 | 25E (W28.8) | 1/2" NPT | 9/16-18 SAE | CUSTOMER SUPPLIED REMOTE PRD |
| TH904-63B92P0-9000 | UNF18 (1 1/8-12 UNF) | 1/2" NPT | 9/16-18 SAE | |
| TH904-62B82P0-9000 | 25E (W28.8) | 3/4-16 SAE | 9/16-18 SAE | |
| TH904-62B92P0-9000 | UNF18 (1 1/8-12 UNF) | 3/4-16 SAE | 9/16-18 SAE | |

We reserve the right to modify product specifications without prior notice.

900 Series Cylinder Ball Valves with Lockout Kit

Oasis Cylinder Valve vs Standard Wheel Valve Flow Area Comparison

