

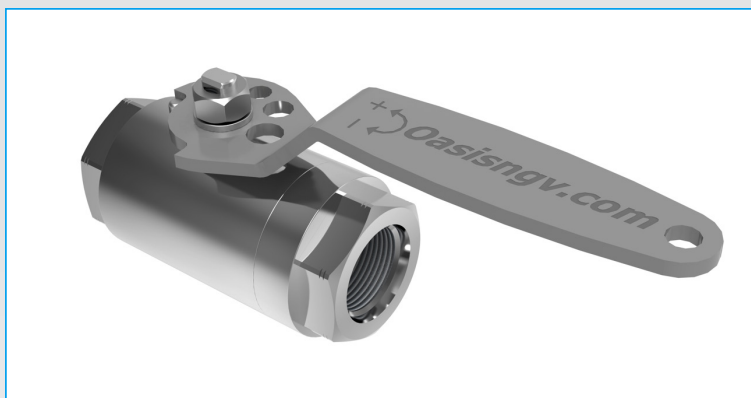


# 900 Series Ball Valves - (Not for Europe)

## Applications

High Flow ball valves for Compressors, Dispensers, Priority Panels, Isolation valves, Gas storage.

Suitable for Hydrogen, CNG, Biogas, Helium, Nitrogen.



BV908-6S6PCDW-G000

## Materials

Item	Part	Material
1	Body & Cap	316 Stainless Steel
2	Ball	316 Stainless Steel
3	Stem	XM19 Stainless Steel (BV904 only)
		316 Stainless Steel (BV908 only)
4	Seats	B16 PEEK

Item	Part	Material
5	Thrust washer	Delrin
6	Gland	Delrin
7	O-rings	Viton
8	Backup rings	Nitrile
9	Handle	304 Stainless Steel

## Product Information

Type tested to ISO23826.

Complies with PED 2014/68/EU.

All products are manufactured to ISO 9001 standards.

SAE threads conform to SAE J1926.

Other connections available on request.

## Features & Benefits

Available in 1/2" and 1" nominal sizing. Other sizes available on request.

Easy to service, kits readily available.

Quarter turn handle.

Anti blow-out stem.

Manufactured from certified bar stock.

Lockout system available to prevent accidental operation of valve.

Actuated options available.

TPED version available.



# 900 Series Ball Valves - (Not for Europe)

## SAE Product Specification

Part Code	Size (DN) Inch	Mass lb (kg)	Lowest Operating Pressure bar (psi) *	Working Pressure (WP) bar (psi) **	Test Pressure (PT) bar (psi) ***	Min. Temp. °F (°C)	Max Temp. °F (°C)	Cycles Before Rekit <sup>^</sup>	Stem Open Torque ft-lb (Nm) <sup>^^</sup>	Cv	Service Kit
BV904-6S4PCDW-G000	1/2"	1.5 (0.7)	6.9 (100)	385 (5584)	462 (6700)	-40 (-40)	149 (65)	2000	14.7 (20)	13.1	BV900-SK1-S4
BV908-6S6PCDW-G000 <sup>^^^</sup>	1"	4.9 (2.2)	6.9 (100)	385 (5584)	462 (6700)	-40 (-40)	149 (65)	2000	33.2 (45)	30.1	BV900-SK2-S8

\* Lowest settled gas pressure for which the ball valve is designed. This is the minimum pressure that the product will hold constant bubble tight seal.

\*\* Settled pressure of a compressed gas at a uniform reference temperature of 15°C in a full pressure receptacle for which the valve is intended.

\*\*\* Minimum pressure applied to the valve during testing

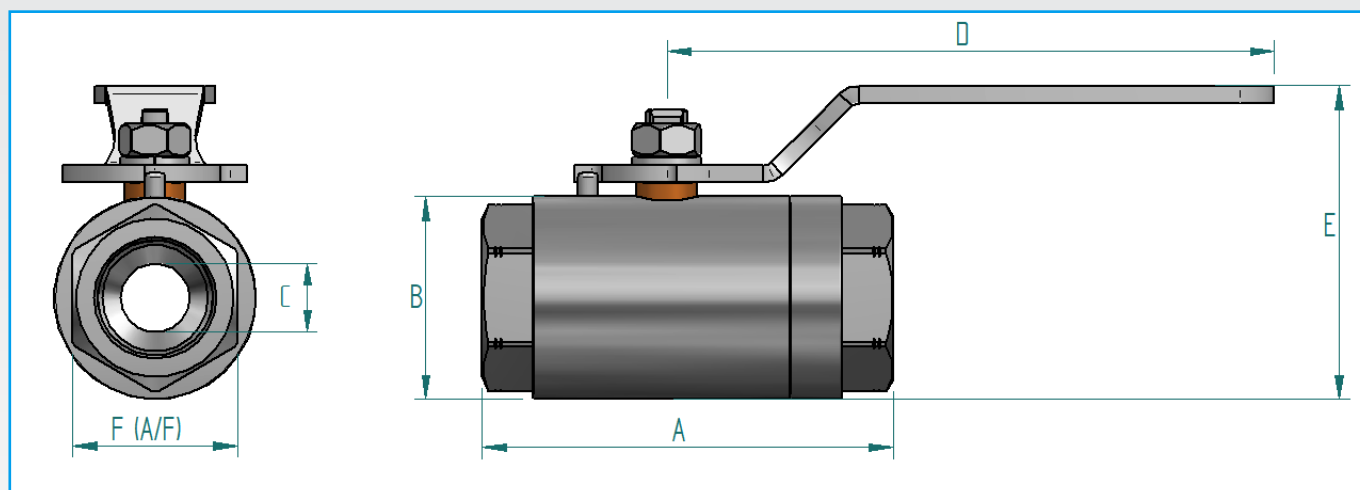
<sup>^</sup> The temperature's and cycles stated depend on the system conditions and may not be achievable in all situations.

Contact Oasis for further information.

<sup>^^</sup> Maximum opening torque at maximum operating pressure.

<sup>^^^</sup> Non-TPED version of the BV908 is currently unavailable in Europe.

## Product Dimensions



## SAE Product Dimensions - Inch(mm)

Part Code	Size (DN) Inch	A	B	Ø C	D	E	Port Thread	F (A/F)
BV904-6S4PCDW-G000	1/2"	3 (75.5)	1.6 (40)	.5 (13)	5.7 (144)	2.7 (69)	3/4-16 SAE FEMALE	1.3 (33.4)
BV908-6S4PCDW-G000 <sup>^^^</sup>	1"	4.7 (120)	2.2 (59)	.78 (20)	6.9 (177)	3.6 (91)	1 5/16-12 SAE FEMALE	1.9 (48)

<sup>^^^</sup> Non-TPED version of the BV908 is currently unavailable in Europe.

Other sizes and fittings available on request, contact Oasis for further information.